

# XCell™ Lab Controller

## User Guide



- PLC Software Version 1.00
- HMI Software Version 1.11
- Surface Pro SP7+
- Windows Version 10 Pro 20H2
- Devices supported XCell ATF® 1, 2 and 4

The information contained in this document is subject to change without notice.

With respect to documentation accompanying Product, Repligen makes no warranty, express or implied. Any and all warranties related to the documentation accompanying Product are expressly disclaimed. Customer shall refer to the terms and conditions of sale governing the transaction for any and all warranties for the Product.

Repligen Corporation shall not be liable for errors contained herein or for incidental or consequential damages in connection with the furnishing, performance, or use of this material.

No part of this document may be photocopied, reproduced, or translated to another language without the prior written consent of Repligen Corporation.

Products are not intended for diagnostic or therapeutic use or in vivo with humans or animals.

For further information, please contact Repligen Corporation at [www.repligen.com](http://www.repligen.com).

©2022 Repligen Corporation. All rights reserved. The trademarks mentioned herein are the property of Repligen Corporation and/or its affiliate(s) or their respective owners.

**Customer Support**

[customerserviceUS@repligen.com](mailto:customerserviceUS@repligen.com)

+1-800-622-2259 (Option 1)

**Repligen Corporation**

41 Seyon Street

Building 1 Suite 100

Waltham, Massachusetts 02453

[www.repligen.com](http://www.repligen.com)

## Contents

<b>1.</b>	<b>Introduction .....</b>	<b>9</b>
<b>2.</b>	<b>Welcome.....</b>	<b>9</b>
<b>3.</b>	<b>About this document .....</b>	<b>10</b>
<b>4.</b>	<b>Safety precautions.....</b>	<b>10</b>
<b>5.</b>	<b>XCell™ Lab Controller quick set-up for experienced users .....</b>	<b>12</b>
5.1	Connections .....	12
5.2	Software set-up .....	12
5.3	XCell ATF® Device start-up.....	12
5.4	Optimization .....	13
<b>6.</b>	<b>Overview of the XCell ATF® Technology and process intensification .....</b>	<b>13</b>
6.1	Alternating Tangential Flow (ATF) Filtration .....	13
6.2	ATF backflush.....	14
6.3	ATF flow rates and displacement volumes.....	14
6.4	System configurations .....	15
6.5	XCell™ Lab Controller .....	16
6.5.1	A2B and A2C tubing sets.....	18
6.6	Supply Air Protection Assembly (SAPA).....	19
6.7	XCell ATF® Device preparation and set-up .....	20
6.8	System set-up .....	20
6.9	IT, Wi-Fi and network connectivity.....	20
6.9.1	Windows environment .....	20
6.9.2	Repligen XCell™ Lab Software .....	20
6.9.3	Modbus/ethernet remote monitoring .....	20
<b>7.</b>	<b>XCell™ Lab Software .....</b>	<b>21</b>
7.1	Touchscreen and touchpad .....	21
7.2	Initial startup .....	21
7.3	Login screen and default password .....	22
7.4	Overview/SCADA screen.....	22
7.5	User interface formats and conventions.....	23
7.6	Screen navigation .....	24
7.6.1	Menu bar .....	24
7.7	ATF Main screen .....	25
7.8	Pop-ups.....	27
7.8.1	Changing ATF Flow set points .....	28
7.8.2	Starting, pausing and stopping an XCell ATF® Device.....	28
7.8.3	Pump status box .....	28
7.8.4	Dual mode.....	29
7.8.5	ATF displacement volume pop-up window .....	32
7.8.6	ATF pressure pop-up window .....	32
7.8.7	Settings sub-menu .....	33
7.8.8	XCell ATF® Device configuration .....	33
7.8.9	Bioreactor configuration.....	34
7.8.10	Default configuration/ATF pump settings .....	34
7.8.11	General configuration .....	35
7.8.12	Service /performance screen.....	36
7.8.13	Logon required - security on/off.....	36
7.8.14	Algorithm pop-ups .....	37
7.9	Trend screen options.....	38
7.9.1	XCell™ Lab Trend screen .....	38
7.10	Alarm categories/types .....	38
7.11	Alarms screen .....	39
7.11.1	Alarm Configuration.....	40

7.11.2	ATF Flow alarm configuration.....	40
7.11.3	Displacement volume alarm configuration .....	41
7.11.4	System alarm configuration.....	41
7.11.5	Permeate (P3) pressure alarm configuration .....	42
7.12	Historian, Trend and Query applications.....	42
7.12.1	Historian Client Software .....	43
7.12.2	Trend.....	43
7.12.3	Query Tool .....	44
7.12.4	Exporting data to Excel .....	44
7.13	Help section .....	46
<b>8.</b>	<b>Running the system .....</b>	<b>47</b>
8.1	Process workflow.....	47
8.2	Selection of ATF flow rates .....	47
<b>9.</b>	<b>Troubleshooting .....</b>	<b>48</b>
<b>10.</b>	<b>Maintenance and service .....</b>	<b>50</b>
10.1	Ongoing service and support.....	50
<b>11.</b>	<b>Appendix A Controller, device and system parts and specifications .....</b>	<b>51</b>
<b>12.</b>	<b>Appendix B IT, IP Addresses and External Communication .....</b>	<b>55</b>
12.1	Changing IP address on the HMI .....	55
<b>13.</b>	<b>Appendix C List of system-defined alarms .....</b>	<b>58</b>
<b>14.</b>	<b>Appendix D Editing and adding access and passwords .....</b>	<b>60</b>
14.1	Windows accounts and passwords.....	60
14.2	XCell™ Lab Software usernames and passwords.....	60
14.2.1	Changing usernames and passwords.....	61
<b>15.</b>	<b>Appendix E Default values on HMI .....</b>	<b>66</b>
<b>16.</b>	<b>Index.....</b>	<b>69</b>

## List of tables

Table 1.	Explanation of user attention phrases.....	10
Table 2.	Safety precautions examples.....	10
Table 3.	Safety warnings.....	11
Table 4.	XCell™ Lab Controller model comparison .....	16
Table 5.	Controller ports.....	18
Table 6.	A2B Tubing ID/OD.....	19
Table 7.	SAPA components.....	19
Table 8.	Preset usernames and passwords .....	22
Table 9.	Starting, pausing and stopping an XCell ATF® Device instructions.....	28
Table 10.	Pump status messages examples .....	29
Table 11.	ATF modes - independent and dual .....	30
Table 12.	Starting, pausing and stopping XCell ATF® Device(s) in Dual Mode.....	31
Table 13.	ATF service parameters .....	36
Table 14.	Alarm status.....	40
Table 15.	Recommended ATF rate to Filtration rate ratios .....	48
Table 16.	XCell™ Lab System Price and Parts List - for Sales.....	51
Table 17.	Windows usernames and passwords .....	60
Table 18.	XCell™ Lab users and roles .....	60

## List of figures

Figure 1.	XCell™ Lab Controller and accessories .....	9
Figure 2.	ATF pressure and exhaust strokes.....	14
Figure 3.	Backflush example .....	14
Figure 4.	Configuration - bioreactor, controller, and utilities .....	15
Figure 5.	Face A of Controller .....	17
Figure 6.	Face B of Controller .....	17
Figure 7.	SAPA components example.....	19
Figure 8.	Touchscreen splash display example .....	21
Figure 9.	Login screen example .....	22
Figure 10.	Overview/SCADA screen example.....	22
Figure 11.	Menu bar example .....	24
Figure 12.	User information .....	24
Figure 13.	ATF main screen example two XCell ATF® Devices attached to same vessel .....	25
Figure 14.	Example - 2 synchronized XCell ATF® Devices attached to the same bioreactor .....	26
Figure 15.	Example - 2 XCell ATF® Devices attached to two bioreactors.....	26
Figure 16.	Example - Dual controller and single XCell ATF® Device .....	27
Figure 17.	ATF Flow pop-up example .....	27
Figure 18.	XCell ATF® Device status - running, paused or stopped.....	28
Figure 19.	ATF DUAL Pop-up example.....	30
Figure 20.	ATF displacement volume pop-up example.....	32
Figure 21.	ATF pressure pop-up screen example.....	32
Figure 22.	Settings sub-menu example .....	33
Figure 23.	XCell ATF® Device configuration example.....	33
Figure 24.	Bioreactor configuration example.....	34
Figure 25.	ATF pump settings example .....	34
Figure 26.	General configuration example.....	35
Figure 27.	Service/performance example.....	36
Figure 28.	ATF-A Algorithm pop-up example .....	37
Figure 29.	ATF-A and ATF-B algorithm pop-ups .....	37
Figure 30.	XCell™ Lab Trend screen example.....	38
Figure 31.	Alarm condition example .....	39

Figure 32.	Alarm status .....	39
Figure 33.	Alarm Configuration example .....	40
Figure 34.	Displacement volume alarm example .....	41
Figure 35.	System alarms example .....	41
Figure 36.	P3 permeate pressure alarm example .....	42
Figure 37.	Accessing Trend and Query example .....	43
Figure 38.	Trend screen example .....	43
Figure 39.	Query example .....	44
Figure 40.	Columns pane - subset of the Query window .....	45
Figure 41.	Query set-up .....	45
Figure 42.	Help feature .....	46
Figure 43.	Workflow for a typical ATF start-up process .....	47
Figure 44.	Control Panel network and sharing center .....	56
Figure 45.	Control Panel's network adapter properties .....	56
Figure 46.	Windows 10 network adapter TCP/IPv4 properties .....	57
Figure 47.	Default values for ATF Pump Configuration .....	66
Figure 48.	Default values for ATF Flow Alarms .....	66
Figure 49.	Default values for Displacement Volume alarms .....	67
Figure 50.	Default values for System Alarms .....	67
Figure 51.	Default values for P3 Permeate Pressure Alarms .....	68

## Abbreviations

A-B	Allen-Bradley
AC	Alternating current
Amp	Ampere
ATF	Alternating tangential flow
ATF-A	XCell ATF® Device A
ATF-B	XCell ATF® Device B
AUX	Auxiliary
A2B	XCell ATF® Device to Bioreactor connection
A2C	XCell ATF® Device to Controller connection
CFM	Cubic feet per meter
CSPR	Cell specific perfusion rate
dB	Decibels
DC	Direct current
DO	Dissolved oxygen
DPv1	PROFIBUS Decentralized Peripherals version 1
FAS	Field Applications Scientist
FC	Flow control
FS	Flow sensor
FSE	Field Service Engineer
HFM	Hollow Fiber Module
HMI	Human Machine Interface
Hz	Hertz
ID	Inner diameter
I/O	Input/output
kg	Kilograms
L	Liter
lbs.	Pounds
LPM	Liters per minute
mA	Milliamp
mL	Milliliter
mV	Millivolt
NPT	National pipe thread
OD	Outer diameter
OSI	Open systems interconnection
PCV	Pressure control valve
PID	Proportional, integral and derivative
PLC	Programmable logic controller
POI	Product of interest
PRV	Pressure regulating valve
PV	Process value
P2	PCV outlet pressure (Commanded pressure)
P3	Permeate pressure
PPE	Personal protective equipment
psi	Pounds per square inch
psig	Pounds per square inch gauge
QC	Quick Connect
SAPA	Supply Air Protection Assembly
SCADA	Supervisory Control and Data Acquisition
SP	Set point
SUB	Single-use Bioreactor
TC	Tri-clamp
TCD	Total cell density

TCP/IP	Transmission control protocol / Internet protocol
UF	Ultrafiltration
VCD	Viable cell density
VDC	Volt direct current
VT	Volumetric throughput
VVD	Vessel volume exchange per day



## 1. Introduction

The XCell ATF® Technology provides a complete solution for the retention of cells, removal of media and, ultimately, the intensification of upstream cell culture processes. It is the most widely used and proven cell retention solution in the world, having been specified in dozens of commercial processes. Thousands of XCell ATF® systems are currently utilized in process development and clinical manufacturing processes. As the gold standard for upstream process intensification, XCell ATF® often delivers at least 10 times higher cell concentrations or product throughput than typical batch and fed-batch processes.

The XCell ATF® System includes several components: a controller (with air and vacuum accessories), software, sensors and XCell ATF® Device.

This User Guide serves as a reference document for your XCell™ Lab Controller and software; updates are made on a regular basis. For the latest version of this document, please visit [the Repligen website](#). Installation by a trained Repligen Field Service Engineer (FSE) is highly recommended.

## 2. Welcome

Thank you for choosing the XCell™ Lab Controller for your laboratory and cell culture intensification needs. This next generation system provides proven upstream intensification performance on an industrial automation platform. The XCell™ Lab Controller combines performance intensification and ease of use into a single solution. Key components include an easy-to-use software, flow sensors, and air and vacuum accessories ([Figure 1](#)). The XCell™ Lab Controller is designed to meet the challenges of the next wave of high-density intensification processes, which are expected to exceed 250 x 10<sup>6</sup> cells/mL.

**Figure 1. XCell™ Lab Controller and accessories**

1. XCell™ Lab Controller
2. XCell™ Lab Software and HMI
3. Flow sensor
4. Supply air protection assembly
5. Vacuum manifold
6. Vacuum pump



Existing XCell ATF® users may jump to [Section 5](#) for an abbreviated setup description.

### 3. About this document

This manual uses several user attention phrases. Each phrase should draw the following level of attention:

**Table 1. Explanation of user attention phrases**

Phrase	Description
<b>Note:</b>	Points out useful information.
IMPORTANT	Indicates information necessary for proper instrument operation.
PRECAUTION	Cautions users of potential physical injury or instrument damage if the information is not heeded.
WARNING!	Warns users of potential serious physical injury if warnings are not heeded.

### 4. Safety precautions

**Table 2. Safety precautions examples**














Description of precautions	
	Use of safety glasses is recommended during installation, set up, operation and while any service or testing is being performed on the system.
	You must use the Supply Air Protection Assembly (SAPA) on your air source to ensure air is brought to a safe pressure, and suitably filtered to ensure pump functionality.
	Vessels or bioreactors should not be pressurized unless otherwise specified by the manufacturer. Glass and single-use bags can explode if pressurized. When using any vessel or bioreactor, be sure to maintain an unrestricted vent or exhaust from the vessel. This will ensure that no significant pressure or vacuum occurs in the bioreactor. In the case of a diaphragm failure, for example, air will penetrate the XCell ATF® Device, through the filter and into the vessel. A free exhaust from the vessel will minimize the build-up of pressure in the vessel.
	You must replace the air filter on Stainless Steel XCell ATF® Devices (ATF2 and ATF4) prior to operation.
	When not in use, you should ensure all the tubing is capped or blocked using the provided caps and valves. It is recommended to keep unused tubing in the original sealed bag.

Table 3. Safety warnings

Description of warnings	
	<b>Power:</b> Do not open powered-on XCell™ Lab Controller enclosure. Remove power from equipment before attempting any maintenance. Calibration, preventive maintenance and repair to be performed only by trained, qualified personnel.
	Use only Repligen provided power supply. Use only high voltage cord specific for your region provided by Repligen. Do not use a damaged power supply or damaged power cord.
	<b>Tubing:</b> Tubing breakage between the XCell ATF® filtration device and bioreactor may result in fluid being sprayed from pump. Use appropriate measures to protect operator and equipment.
	Do not perform cleaning (wipe down) of the XCell™ Lab Controller when the enclosure cover is open. Confirm all connectors (connection bulkheads) are firmly seated in their respective sockets.
	<b>Weight:</b> XCell™ Lab Controller weighs 44 lbs. (15.5 kg). When the enclosure must be moved, use necessary precautions prior to and during the movement. Make sure no electrical, pneumatic or signal connections are made when system is moved.
	Wear standard laboratory PPE, including lab coat, protective eye wear and gloves.
	<b>Air and vacuum:</b> XCell™ Lab Controller requires pneumatic connections of positive air pressure and vacuum using Repligen provided hoses with safety quick connectors. Positive air pressure tubing is colored red while vacuum tubing is colored blue. The connection points are identified as Pressure and Vacuum. The pneumatic lines should be kept free from dust and particles. Please ensure the following: <ul style="list-style-type: none"> <li>• The air filters on the controller in the A2C line are always present, and changed out during the annual PM.</li> <li>• The A2C lines have ball valves that should be turned to closed position when they are not connected to an XCell ATF® Device.</li> <li>• When the equipment is not being used, the A2C lines should be capped.</li> <li>• The SAPA unit should always be connected to the controller.</li> </ul>
	<b>Supply Air Protection Assembly (SAPA):</b> While almost all labs do filter incoming air, Repligen cannot warranty the controller without the use of a SAPA on the incoming line, which filters the air entering the XCell™ Lab controller. The Supply Air Protection Assembly must be mounted to a solid support, either a wall or table.

## 5. XCell™ Lab Controller quick set-up for experienced users

If you are an experienced XCell ATF® user and already familiar with the [Set-up Guide](#) and Health and Safety guidelines, then this section will help you get set-up quickly. If you need further guidance, please review the full User Guide, including the Appendices, or reach out to a local FAS.

### 5.1 Connections

Connect all components as described below:

- a. Orient the controller on the bench as you see appropriate for your bioreactor setup. A maximum of two controllers can be stacked vertically.
- b. Place the tablet in a convenient location, either on the controller or attached to a shelf.
- c. Connect the air utility line to the SAPA, through the manifold and then to up to four controllers. Use the supplied adaptors if needed.
- d. Connect your lab vacuum supply or Repligen supplied vacuum pump to the vacuum manifold. Use the supplied adaptors if needed.
- e. Prepare the XCell ATF® Device(s) according to the appropriate [Device Set-up Guide](#).
- f. Connect the XCell ATF® Device(s) to the bioreactor using the A2B tubing kit supplied by Repligen.
- g. Use the correctly sized/labelled A2C tubing for the XCell ATF® Device you plan to use.
- h. Make sure the flow sensor is correctly oriented and stably positioned on the A2B tubing in a location where air bubbles are not likely to collect within the tubing.
- i. Connect the permeate pressure sensor (P3), if used.
- j. To supply power to the controller, connect the 24 V adaptor to the wall power source.
- k. Turn on the controller and tablet. By default, no logon credentials are required for the tablet. The XCell™ Lab Software opens with the **Supervisor** account and displays the **Overview** screen

### 5.2 Software set-up

Please note the following:

- The newly designed software interface allows you to make real-time changes to the set points.
- During operation, certain buttons are pre-programmed to be greyed out and remain non-functional to prevent unnecessary and undesired changes (for example, change of XCell ATF® Device size is not allowed while the device is running).
- Certain options and buttons will not be visible if you are logged in as a **User** (limited access) With auto login enabled, the default user level **Supervisor** allows complete access.
- Default settings typically are suitable for most processes; no further adjustments should be required.

To get started:

- a. On the main menu (top), click the **Settings** button, which displays the **Settings** sub-menu.
- b. The first (and default) button, **ATF configuration**, allows selection of ATF size and filter type.
- c. Click the second button, **Bioreactor configuration**, to change the default settings of one ATF attached to a bioreactor.
- d. Other buttons allow you to change date and time formats, pump settings, flow rates etc.

### 5.3 XCell ATF® Device start-up

- a. Click the **ATF** button on the main menu to open the **ATF Main** Screen.
- b. Click the **ATF Flow** box or the ATF graphic, both of which open a pop-up window.
- c. Click **Start**. The priming sequence begins and the run starts.

**Note:** You can change the set points at any time before starting a run and during a run.

## 5.4 Optimization

It is important to optimize process conditions. The guidelines in this document provide a useful resource as you plan your process development, but please reach out to your local FAS for consultation during optimization, scale-up and scale down experimental design or data review.

## 6. Overview of the XCell ATF® Technology and process intensification

The XCell ATF® Technology provides a complete solution for the retention of cells, removal of media and ultimately the intensification of upstream cell culture processes. XCell ATF® Devices are often used in continuous upstream processes, also called perfusion, but are equally beneficial in fed-batch and hybrid processes. Examples of application of a cell retention device for fed- batch include:

- N-1 processes using short periods of perfusion to boost cell growth or regular media exchange
- High Productivity Harvest (HPH) application for fed-batch gene therapy, vaccine, mAb and recombinant processes to boost productivity while also eliminating both centrifugation and depth filtration unit operations.
- Perfusion for continuous processing
- Vaccine and viral process intensification

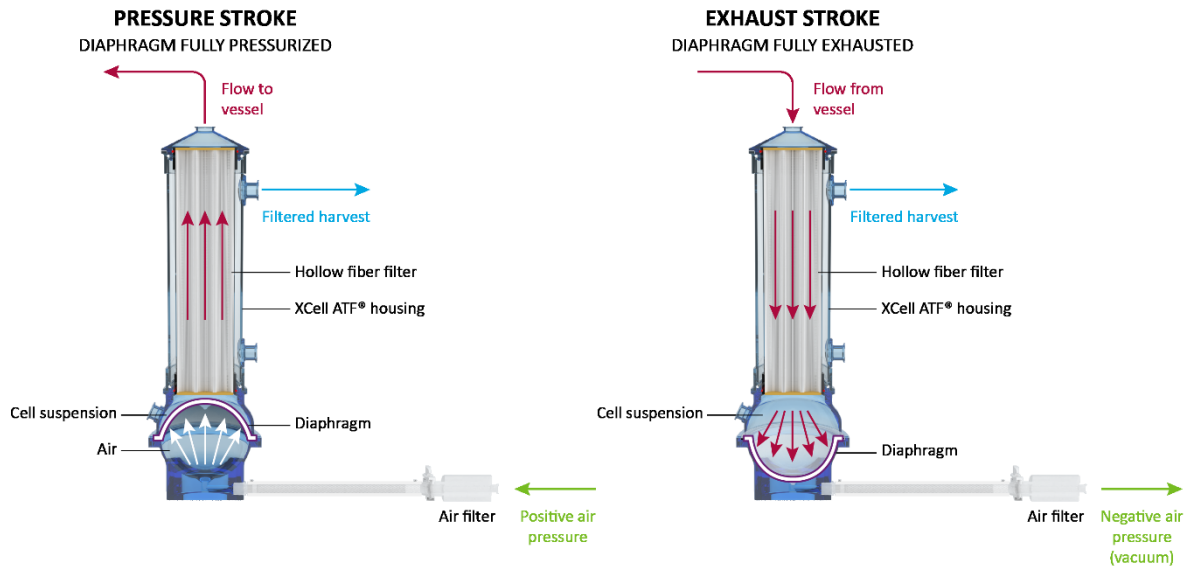
Repligen has an experienced global team of scientists ready to support the development, optimization, scale-up and troubleshooting of XCell ATF® intensified cell culture processes. For support or troubleshooting, please contact your local FAS.

A preventative maintenance (PM) contract ensures continued operation of the system at optimal performance levels. The pneumatic parts that are connected to the controller and SAPA should always remain free of dust and particles. Refer to [Section 4](#) for additional safety precautions.

### 6.1 Alternating Tangential Flow (ATF) Filtration

The diaphragm pump of the XCell ATF® System generates alternating tangential flow (ATF) through hollow fiber filters. ATF is a low shear, rapid, pulsating and bi-directional flow of cell suspension between a bioreactor and a diaphragm pump ([Figure 2](#)). Cell culture moves in a continuous back and forth motion through the lumen of the hollow fiber filters. Two strokes of the diaphragm pump, the Pressure stroke (P-stroke) and the Exhaust stroke (E-stroke), complete each back and forth cycle. Delivery of positive air pressure to the base of the diaphragm by the pressure control valve in the controller initiates the P-stroke. Positive air pressure pushes the diaphragm up from the *air-side* hemisphere of the device, driving liquid from the diaphragm pump through the lumen of the hollow fiber filters and back to the bioreactor. Replacement of the positive pressure under the diaphragm pump with a vacuum initiates the E-stroke. The vacuum pulls the diaphragm down from the *liquid-side* hemisphere of the device, pulling liquid from the bioreactor through the hollow fiber lumens and towards the diaphragm pump.

Figure 2. ATF pressure and exhaust strokes

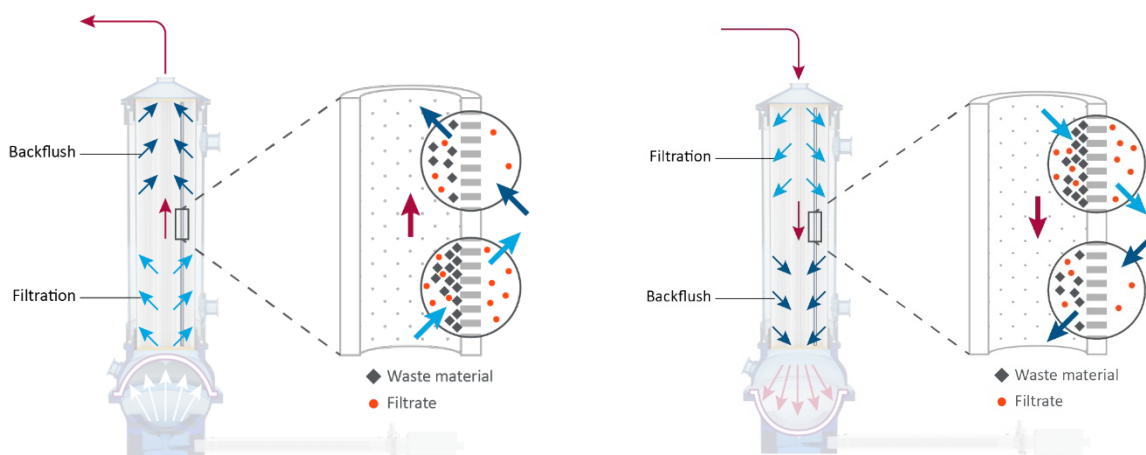


### 6.2 ATF backflush

In most tangential flow filtration processes, liquid typically only moves across the filter from the retentate side to the filtrate side. During ATF, liquid moves both from the retentate side to the filtrate side as well as from the filtrate side to the retentate side. Liquid transfer from the filtrate side to the retentate side is referred to as *backflush* and the action plays an essential role in the differentiated ATF performance (Figure 3). Alternating flow generates negative pressure across the hollow fiber filter during each pump stroke. The section of the hollow fiber experiencing the negative pressure (and the consequential backflush) depends on the direction of the pump stroke. Backflush effectively reduces or eliminates filter fouling by displacing material from the lumen wall. Incorrect ATF operation with insufficient pump displacement and/or low ATF flow rates create reduced levels of backflush, which can compromise results. Smart mechanisms, built into the algorithm and alarms (both default and user defined), automatically compensate and help minimize fouling. The [Troubleshooting Section](#), provides additional approaches and solutions to fouling and other frequently observed challenges.

### 6.3 ATF flow rates and displacement volumes

Figure 3. Backflush example



Backflush in pressure stroke (left); backflush in exhaust stroke (right)

The flow rate of cell culture liquid from A2B does not remain constant over the course of a pump stroke. As the diaphragm begins to move from a stationary position, the flow rate starts relatively low. As the diaphragm travels further, the flow begins to increase and reaches a maximum value approximately at the midpoint. Toward the end of the diaphragm trajectory, the flow rate once again begins to slow. The change in the flow rate over the course of the pump stroke may therefore be considered to be sinusoidal. The controller records the *instantaneous flow rate* approximately every ~100 ms during each stroke (ml/min) and then averages all stroke measurements over the cycle to generate the *ATF flow rate*. The ATF flow rate contains data averaged over 10 cycles, which largely eliminates outliers and noise.

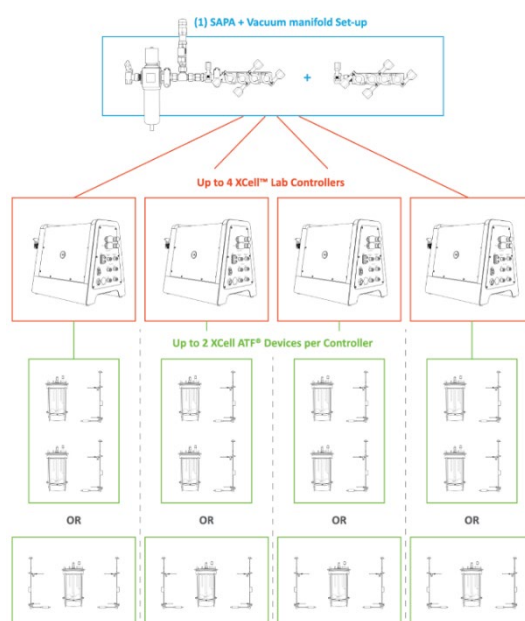
You control the ATF flow rate by entering a value for the *ATF Flow Rate Set Point*. Due to the sinusoidal nature of the flow rate over the course of an ATF cycle, the measured instantaneous flow rate may be either higher or lower than the reported ATF flow rate over the course of each stroke. Generally, you do not need to consider the Instantaneous Flow Rate, except during troubleshooting. A well-controlled XCell ATF® Device will have the following flow rate properties:

- achieves maximum flow quickly
- switches smoothly between strokes
- minimal to no delay between strokes (referred to as the *Dwell Time*)
- maximum liquid displacement during strokes (referred to as *Displacement Volume*)

The recommended ATF Flow Rate Set Points and the typical Displacement Volumes are programmed into the ATF System as default values. The calculated average displacement volume from the flow sensor is updated every 30 minutes to further improve the response accuracy.

## 6.4 System configurations

**Figure 4. Configuration - bioreactor, controller, and utilities**



The XCell ATF® Lab System is designed to support multiple controllers simultaneously. Each controller, in turn, supports multiple devices and bioreactors (Figure 4). The multiplicity from your utilities to your bioreactors provides significant facility and configuration flexibility.

Both positive air pressure and the vacuum source lines connect to intermediate manifolds with one input and four outputs. Volumetric air flow and vacuum requirements will vary with the number of controllers as well as the number and the model of filtration devices used.

A dedicated tablet running the XCell™ Lab software operates each controller

- Each controller supports up to 2 XCell ATF® Devices, depending on the model purchased
- The XCell™ Lab Controller will run XCell ATF® 1, 2 and 4 Devices, with adjustment of A2C tubing, A2B tubing and flow sensor
- Two XCell ATF® Devices from a single controller may be connected to two bioreactors. Alternatively, two XCell ATF® Devices from a single controller may be connected to a single bioreactor for an increased rate of media exchange.

## 6.5 XCell™ Lab Controller

XCell™ Lab Controller is available in 3 different models ([Table 4](#)). Controller model number XC-LAB-D-P utilizes a permeate pressure sensor to gain insight into real-time filter performance and fouling characteristics. This data helps determine when a filter should be replaced and improves scale-up prediction.

**Table 4. XCell™ Lab Controller model comparison**

Features	XC-LAB-S	XC-LAB-D	XC-LAB-D-P
Single ATF Operation	✓	✓	✓
Dual ATF Operation	×	✓	✓
In/Out of Phase or Independent Dual Operation	N/A	✓	✓
Transmembrane Pressure (P3)	×	×	✓
Single Use XCell ATF® 1	✓	✓	✓
Single Use XCell ATF® 2	✓	✓	✓
Autoclavable XCell ATF® 2	✓	✓	✓
Autoclavable XCell ATF® 4	✓	✓	✓

If monitoring filter fouling and permeate pressure is important to your process, then you should consider purchasing the D-P model as this feature is not available on the S and D models. If you purchase an S model, you will not be able to upgrade your controller to a D model. The controller is powered by a 110-220 V AC source that is converted to 24 V DC. International AC connectors for the United States, United Kingdom, European Union and China are included with your shipment. Locations that utilize an adaptor outside this set of four will require a customer provided adaptor.

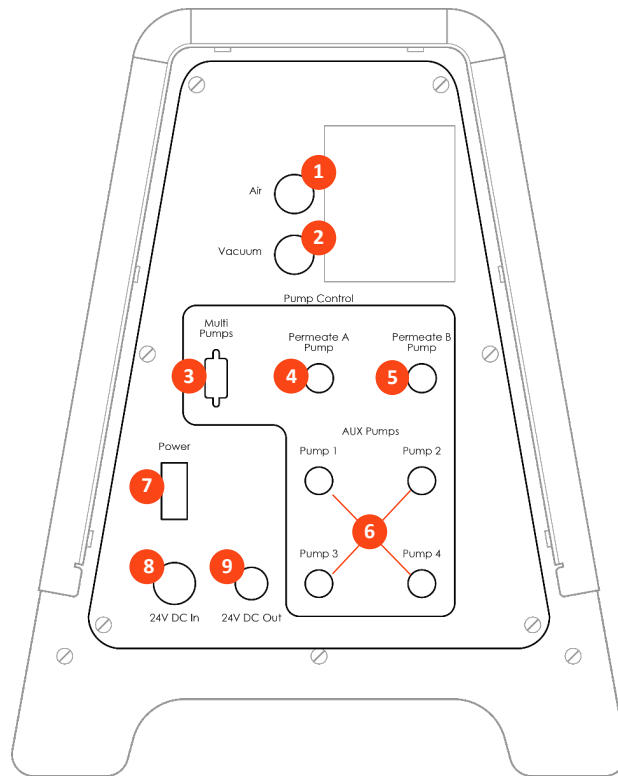
The controller has two faces with utility ports and controls. Face A of the controller governs utility inputs, including the vacuum, air and electric power to the enclosure ([Figure 5](#)). Face A also includes the power switch for the controller. Note that some ports on Face A may not be used in the current model.

**Note:** The utility tubing set provided connects to the air and vacuum ports ([Figure 5](#)). The air tubing connects the controller to the SAPA, not directly to your lab utility source.

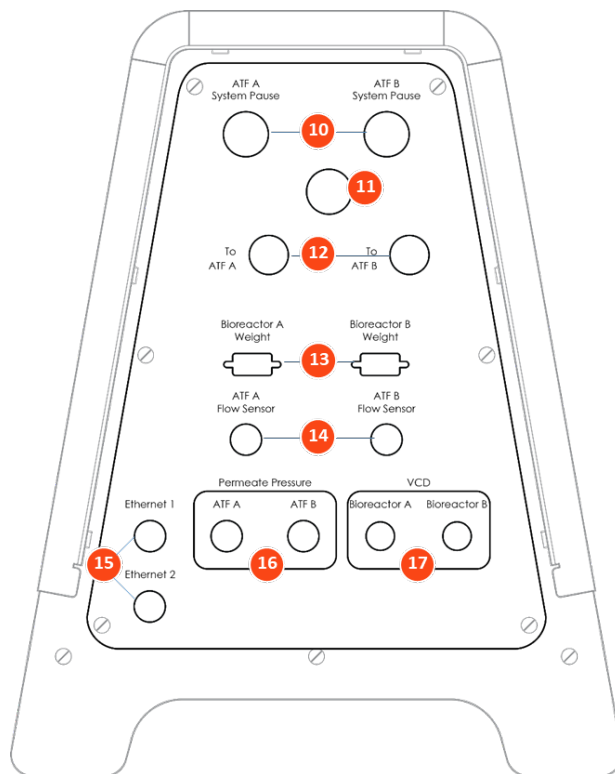
Face B of the controller ([Figure 6](#)) governs output operations, including connection to the XCell ATF® Device and relevant sensors.



**Figure 5. Face A of Controller**



**Figure 6. Face B of Controller**



**Table 5. Controller ports**

	Item	Description
1	Air	Positive air pressure from SAPA
2	Vacuum	Vacuum line from facility line or vacuum pump manifold
3	Multi-pumps	<i>NOT CURRENTLY USED</i>
4	Permeate A pump	<i>NOT CURRENTLY USED</i>
5	Permeate B pump	<i>NOT CURRENTLY USED</i>
6	AUX Pumps	<i>NOT CURRENTLY USED</i>
7	Power switch	Power on/off
8	24V DC in	DC power from power supply
9	24V DC out	<i>NOT CURRENTLY USED</i>
10	ATF A / B System pause	Pause buttons for ATF A and ATF B LED light to indicate status
11	Alarm	Visual alarm (audio optional)
12	To ATF A / B	A2C connections for air pressure and vacuum to ATF filtration devices
13	Bioreactor A / B Weight	<i>NOT CURRENTLY USED</i>
14	ATF A / B Flow Sensor	A2B retentate line flow sensor connections from filtration devices
15	Ethernet	1: Communication between controller and tablet (M12 via ethernet to RJ45 USB adapter on tablet) 2: <i>NOT CURRENTLY USED</i>
16	ATF A / B Permeate pressure	Permeate line P3 pressure sensor inlet connections
17	VCD – Bioreactor A / B	<i>NOT CURRENTLY USED</i>

Two manual pause buttons (item 10) allow each device to be independently paused. The alarm (11) alerts the user when attention is required. The A2C lines (12) provide positive and negative air pressure to the XCell ATF® Device. Pressure (16) and flow (14) sensor ports carry data from the device-mounted sensor to the controller. An ethernet port (15) transfers data to a tablet for viewing, processing, and analysis. Like Face A, some ports of Face B are not used in the current model.

The software interface is accessed through a Surface Pro tablet, provided in a protective case. The tablet may be mounted directly on the controller or to a shelf, using a bracket and moveable support arm. Each controller requires a dedicated tablet that uses a wired ethernet connection to the controller port.

### 6.5.1 A2B and A2C tubing sets

Each XCell ATF® Device requires a specific A2B and A2C tubing set size. The controller ships with a collection of A2C tubing sets suitable for all devices (ATF1, ATF2 and ATF4). The A2C tubing may appear to be similar – but they are not – and each is designed to function with a specific XCell ATF® device size. Labeling on the tube sets indicates use with an ATF1, ATF2 or ATF4 device. The A2C tubing set connects the XCell ATF® Device to the controller.

A flow sensor on the A2B line, engineered specifically for XCell ATF® applications, requires a specific tubing OD and tubing type. Tube sets with a permeate pressure sensor also are available. Both the flow sensor and the pressure sensor connect directly to the controller. The device specific setup-guides describe tube set specifications in detail; a brief summary is provided in the table below.

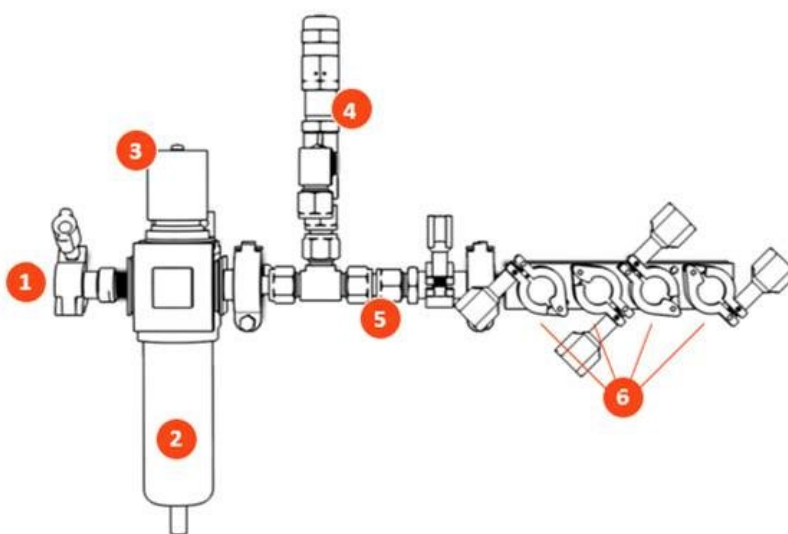
**Table 6. A2B Tubing ID/OD**

Device	Tubing ID /OD	Repligen Supplied Tube set?
XCell ATF® 1	1/8" / 1/4"	Yes, part of device
XCell ATF® 2	1/4" / 3/8"	Yes, supplied separately
XCell ATF® 4	3/8" / 5/8"	Yes, supplied separately

Please reach out to your local Repligen representative for more information.

**6.6 Supply Air Protection Assembly (SAPA)**

**Figure 7. SAPA components example**



**Table 7. SAPA components**

Item	Description
1	Manifold inlet Pressurized air from air supply
2	Filter unit Filters air routing from air supply to manifold Filter porosity: 0.3
3	Pressure regulator Factory set air pressure supply regulator designed to downregulate the supply air to a lower pressure required to operate XCell ATF® 1, XCell ATF® 2 and XCell ATF® 4 (do not adjust)
4	Pressure relief valve Factory set air supply pressure relief valve set to relieve if inlet pressure exceeds the specification noted above (do not adjust)
5	Positive pressure supply manifold Pressurized air to XCell™ Lab Controller(s)
6	Manifold outlets Distributes air pressure to up to four XCell™ Lab Controllers

The SAPA normalizes air pressure from the lab utility line down to the required 15.6 psi. The minimum utility air pressure requirement is 30 psi. A pressure relief valve provides safety in case of the unlikely failure of the regulator (Figure 7). The regulator and relief valve are pre-set at the factory; no modification is required by the end user. Installation should be performed or supervised by an authorized Repligen service engineer.

**Note:** The SAPA must be installed with the air filter oriented downwards and plumbed.

## 6.7 XCell ATF® Device preparation and set-up

Set-up guides, included with each XCell ATF® Device, describe how to assemble, wet, autoclave (if stainless steel), test and connect the XCell ATF® Device to the controller. For stainless steel devices, the autoclavable filter preparation guide comes in the box with each filter.

All Device Set-up Guides are available [online](#).

## 6.8 System set-up

Please refer to the separate XCell™ Lab Controller Set-up Guide provided with the equipment. Access the most up to date version [online](#).

## 6.9 IT, Wi-Fi and network connectivity

The XCell™ Lab is designed as a stand-alone control system. Both a wired ethernet and Wi-Fi are available for data transfer on the Surface Pro tablet. Repligen does not support integration of the tablet into a network in any way. Please see [Appendix B](#) for further details.

### 6.9.1 Windows environment

The Surface Pro comes with Windows® 10 Pro installed. The user bears full responsibility for modifications to the software system. These software changes include, but are not limited to, Windows software updates, anti-virus applications, and Microsoft® Office products. While we do not expect any impact to the functionality of the Repligen supplied programs through typical use and/or Windows® maintenance, we cannot guarantee the correct functioning of the system.

### 6.9.2 Repligen XCell™ Lab Software

Repligen built XCell™ Lab Software is easy and intuitive to use. It is a Wonderware View application, with several useful software modules included in this release including Historian, Query and Trend, as described later in this guide.

### 6.9.3 Modbus/ethernet remote monitoring

Process data is recorded locally. The system currently does not support third-party interfaces or remote monitoring.

## 7. XCell™ Lab Software

### 7.1 Touchscreen and touchpad

Figure 8. Touchscreen splash display example



The user interface is designed to be intuitive and simple to use. The XCell™ Lab Controller is controlled and operated using a touchscreen tablet. The touchscreen enables quick user input and easy navigation between different screens. A touchpad is also provided for use with the Query and Trend Tools, for executing more complicated and advanced selections.

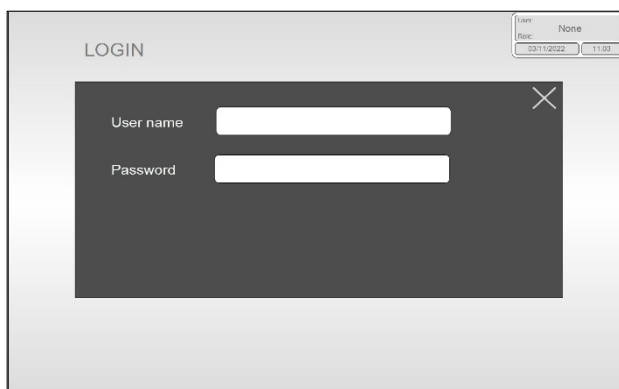
### 7.2 Initial startup

The tablet will boot directly into the XCell™ Lab Software program and display the splash screen below (Figure 8) when switched on. Login to Windows is not required. To add a Windows login, please see [Appendix B](#).

As the program loads, it will display **Loading...** and then either ask for a login or go straight to the **Overview** screen if login is disabled.

### 7.3 Login screen and default password

Figure 9. Login screen example



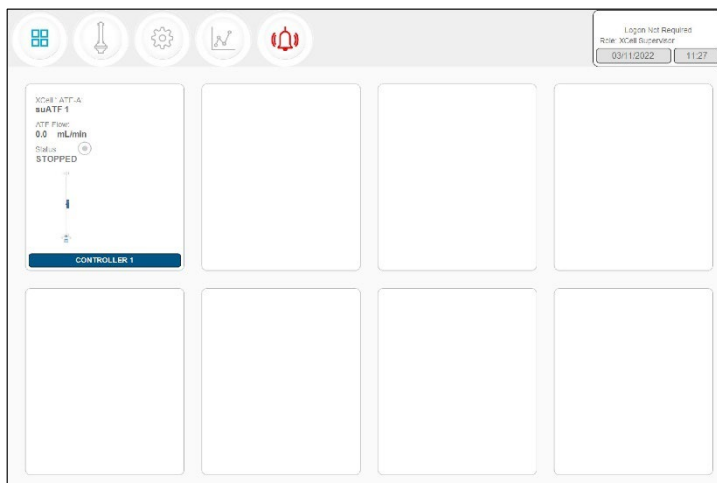
When you load the software for the first time, the login screen will not display. Security is turned off as a default setting. Once security is enabled, the following login screen (Figure 9) appears, requiring a username and password. Default usernames and passwords are listed in Table 8.

Table 8. Preset usernames and passwords

Username	Password
Opr	1234
Eng	1234
Super	1234

### 7.4 Overview/SCADA screen

Figure 10. Overview/SCADA screen example

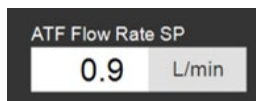


The **Overview** screen displays the connectivity of several controllers and devices (Figure 10). Currently, the XCell™ Lab Software manages one controller (up to two devices) per tablet.

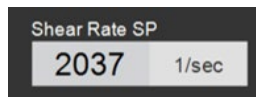
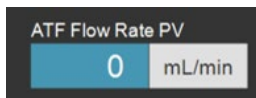
From this menu, you may choose to explore options by pressing a menu item in the top left. Access the **Main ATF** Screen by pressing the **ATF** Button.

## 7.5 User interface formats and conventions

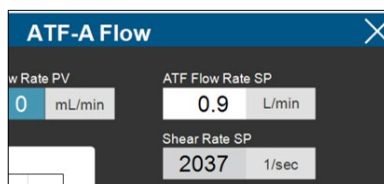
The software is designed with careful consideration of colors, formats and conventions to quickly build familiarization. These are briefly described below.



Boxes which allow user input have white backgrounds (such as ATF flow rate set point).



Boxes with values that cannot be changed by a user either have a colored background (such as some Process Values) or a grey background (such as fixed dimensions of a filter, shear rate or values for informational purposes only).



Close pop-ups by selecting X in the top right corner of the screen.



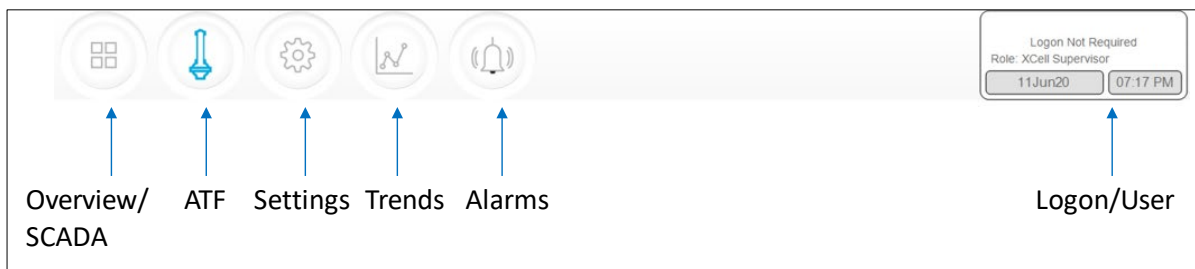
Device start, pause and stop features are highlighted green, yellow, and red, respectively, when active.

**Note:** Some options may be greyed out or missing from your software version. This could be either due to the version of hardware purchased (S, D, or D-P), or because the device configuration chosen does not support that feature (e.g. dual mode with different sized XCell ATF® Devices).

## 7.6 Screen navigation

### 7.6.1 Menu bar

Figure 11. Menu bar example



The menu bar displays six options at the top of the screen (Figure 11). The blue highlighted button indicates the screen currently active. To change to another screen, just press one of the other buttons.

- 1. Overview/SCADA Button**

Navigates to the SCADA area that is capable of showing up to 8 connected controllers. Only one controller is currently supported by the XCell™ Lab Software.

- 2. ATF Button**

Navigates to the Main Screen, also called the ATF Screen.

- 3. Settings Button**

Displays settings for both controller and XCell ATF® Devices. This screen enables access and modification of ATF size and type, bioreactor settings, engineering units, run time, and service information.

- 4. Trends Button**

Displays data trends and plots.

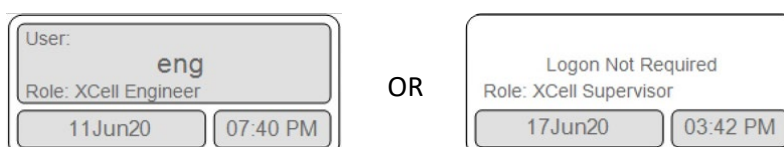
- 5. Alarms Button**

Displays historical alarms and settings for alarm set-up.

- 6. Logon/User Button**

If security is enabled, the logon sub-menu displays username and role. If security is disabled then **Logon Not Required** message is displayed (Figure 12). The logon display also acts as a menu, accessing the option to switch users or log out. User roles, access level and permission rights are described in more detail in Appendix B. Date and time, the formats of which can be changed in **Settings**, are included in this display.

Figure 12. User information



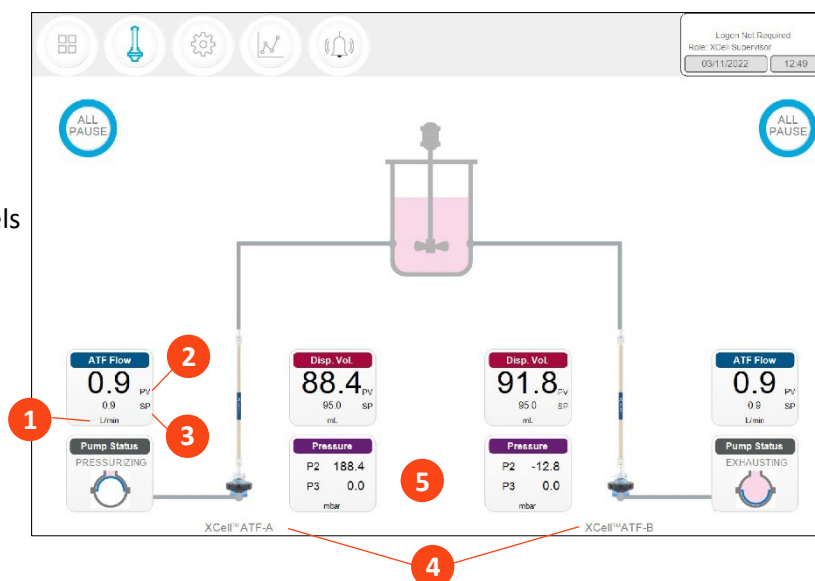
When security is enabled (left) vs disabled (right)



## 7.7 ATF Main screen

**Figure 13. ATF main screen example two XCell ATF® Devices attached to same vessel**

1. Units
2. Process value (bold)
3. Set point (SP)
4. XCell ATF® Device labels
5. P2, P3



The **ATF main** screen ([Figure 13](#)) displays sensors and information appropriate for connected hardware. **Figure 13** shows two XCell ATF® Devices on a single vessel. The permeate pressure (P3) is also displayed on the screen (controller model XC-LAB-D-P).

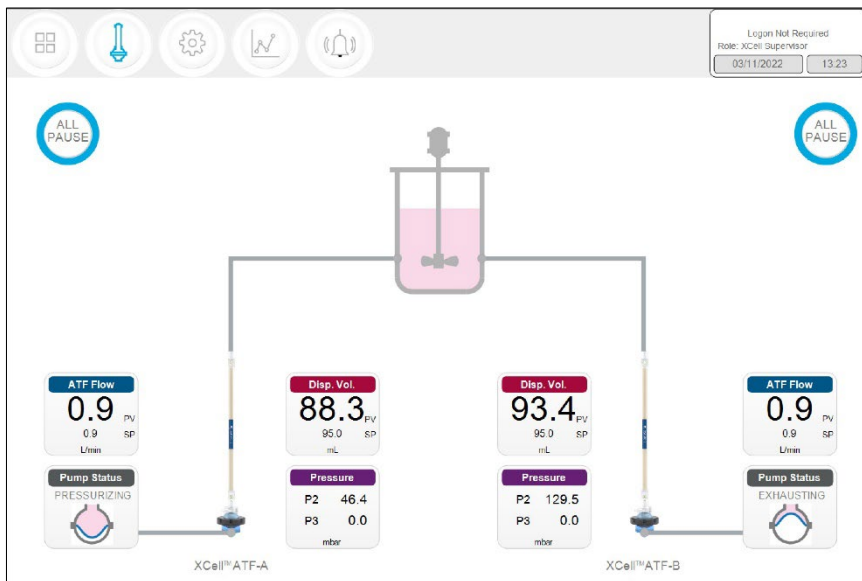
**Note:** Throughout the software and this guide, each XCell ATF® Device is described as **XCell™ ATF-A** and **XCell™ ATF-B**. XCell ATF® Device sizes are specified in **Settings**.

**Note:** The **ATF DUAL** box is only displayed when it is possible to run in dual mode (i.e. two same sized XCell ATF® Devices on one bioreactor) and includes the synchronization mode of the pumps. In independent mode, grey dotted lines appear from the **ATF Flow** box to the **Pump Status** box ([Figure 13](#)). In synchronized mode, grey dotted lines appear from the **ATF DUAL** box to the **Pump Status** box ([Figure 14](#)).

[Figure 14](#) shows two XCell ATF® Devices connected to one bioreactor as a dual system with the two pumps working out-of-phase. The ATF DUAL box displays **Out of Phase** pump status. Please refer to [Table 10](#) for pump status details.

**Note:** To change the ATF Flow Set point, you must open the **ATF DUAL** box – you cannot change the setpoints in the respective ATF-A Flow and ATF-B Flow boxes since the devices are now linked out of phase.

Figure 14. Example - 2 synchronized XCell ATF® Devices attached to the same bioreactor



**Note:** When an XCell ATF® Device is not running, the **ATF Flow** displays a zero value and the corresponding **All Pause** button is greyed out (Figure 15).

Figure 15. Example - 2 XCell ATF® Devices attached to two bioreactors

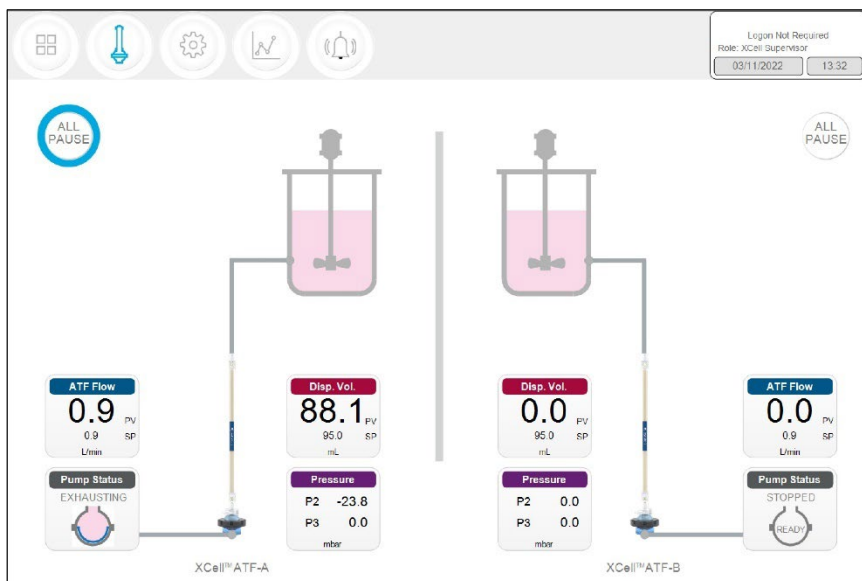
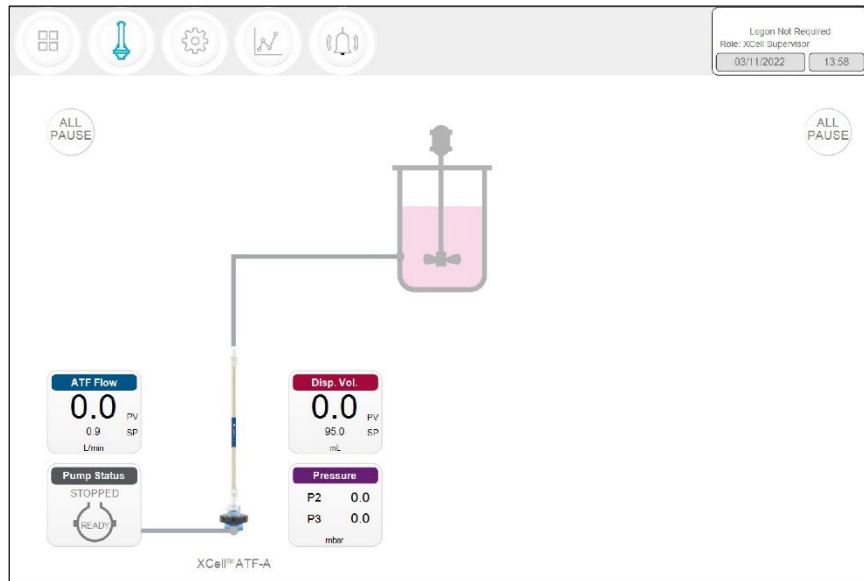


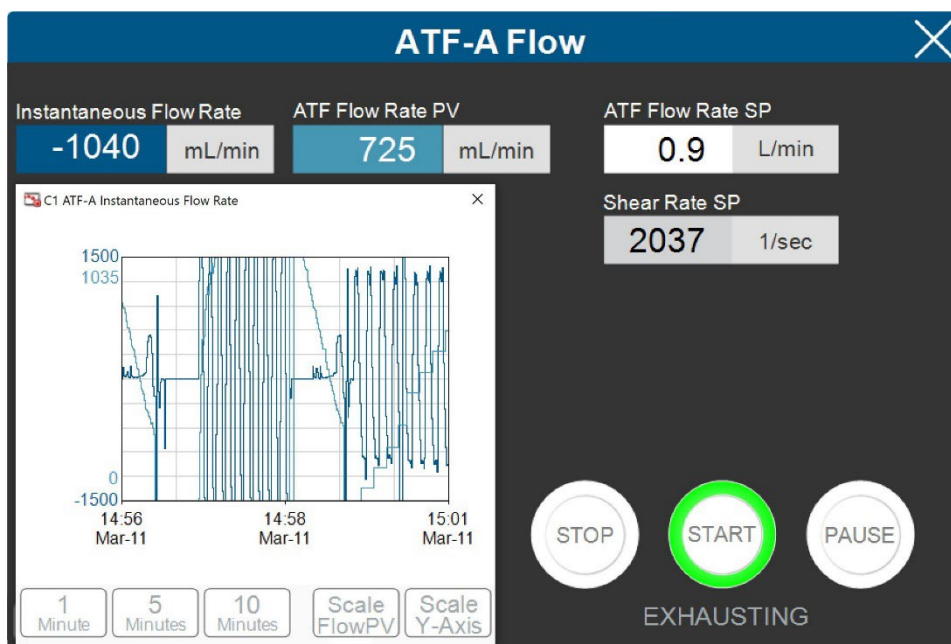
Figure 16. Example - Dual controller and single XCell ATF® Device



A **S** (single) model controller will display only one bioreactor and one XCell ATF® Device. A **D** (dual) or **D-P** model controller configured for a single XCell ATF® Device will display one XCell ATF® Device and one bioreactor (Figure 16).

7.8 Pop-ups

Figure 17. ATF Flow pop-up example



A dedicated Pop-up that contains more detailed information exists for each process variable (colored boxes). For example, the **ATF Flow** Pop-Up displays the ATF Flow Rate (PV and SP), the Instantaneous Flow Rate, Shear rate SP and a chart (Figure 17). When two devices are connected to the controller, an additional option to set the dual ATF pump synch mode (Figure 19).

### 7.8.1 Changing ATF Flow set points

ATF Flow Set Points (SP) can be changed at any time, including while the XCell ATF® Device is running. Pressing the white box of the ATF Flow Rate SP (Figure 17) opens a dialog box, prompting for the new set point. If the entered value lies within the allowable range, the new value is immediately implemented. The theoretical Shear Rate SP is also calculated and displayed below the ATF Flow Rate SP.

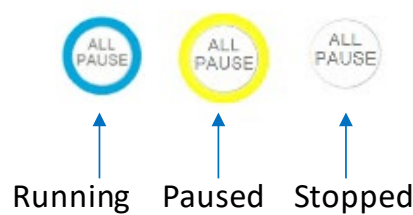
If you are unsure of what Set Point is right for your process, contact a local FAS to discuss the impact of changing the ATF Flow rate for your process.

### 7.8.2 Starting, pausing and stopping an XCell ATF® Device

Table 9. Starting, pausing and stopping an XCell ATF® Device instructions

Actions	Steps and explanations
Start an XCell ATF® Device	Press the corresponding <b>ATF Flow</b> Box which opens the <b>ATF-A (or -B) Flow pop-up</b> window, and then press <b>Start</b>
Pause an XCell ATF® Device	<ol style="list-style-type: none"> <li>1. Press <b>Pause</b> on the <b>ATF Flow pop-up</b> <b>OR</b></li> <li>2. Press corresponding <b>All Pause</b> button on ATF Main screen. Each <b>All Pause</b> button pauses one ATF in independent mode, and both ATFs in dual mode.</li> <li>3. Press the appropriate Device <b>PAUSE</b> button on the controller. The buttons on the hardware match the functionality of those on the software.</li> </ol> <p>A <b>Pause</b> is typically used mid-run, for instance to change out an XCell ATF® Device, or to adjust something momentarily before continuing as before. If you plan to stop then restart the XCell ATF® Device within the same process, the <b>Pause</b> button should be used instead of <b>STOP</b>. Upon pressing <b>Start</b> again, the controller will resume using the settings and valve positions at the time the process was paused.</p> <p>Once device is paused, <b>All Pause</b> button becomes colorless and cannot be pressed. Upon re-start, the controller starts without utilizing previous settings.</p>
Stop an XCell ATF® Device	Press <b>Stop</b> on the <b>ATF Flow pop-up</b> . A <b>Stop</b> is recommended to be used only at the end of a run.

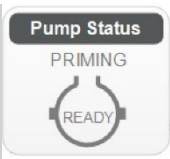
Figure 18. XCell ATF® Device status - running, paused or stopped



### 7.8.3 Pump status box

An animated graphic in the **Pump Status** box shows real-time diaphragm movement. The message displayed describes the action performed by the controller on the diaphragm. Pump status messages include:

Table 10. Pump status messages examples

Image	Messages displayed	Explanation
	Priming	The first series of cycles performed to prime the ATF pump and remove most or all of the air in the XCell ATF® Device and tubing.
	Zeroing FT	The controller stops the ATF pump and waits until there is no flow in the A2B line and then zeros the flow sensor.
N/A	Waiting	Shown rarely in dual mode during the initialization stage, for example, if the system is waiting for liquid flow to stop in the second ATF before zeroing the sensors.
	Detecting MinPress	The controller runs an automated algorithm to determine the minimum driving pressure required to move the diaphragm.
	Stopped	A Stop button has been pressed on the HMI.
	Paused	A blue Pause button has been pressed, either on the HMI or on the side of the controller.
	Pressurizing	The controller is performing the P-stroke, i.e. pressurizing the diaphragm and moving it up displacing liquid into the vessel.
	Exhausting	The controller is performing the E-stroke, i.e. exhausting the diaphragm and moving it down displacing liquid into the ATF pump.

#### 7.8.4 Dual mode

XCell ATF® D and D-P controller models can run two XCell ATF® Devices at the same time. If the devices are same size and connected to a single bioreactor, they may be run in one of three synchronized modes ([Table 11](#)). To switch from the single to dual mode, open the settings > ATF configuration sub-menu ([Figure 23](#)) and select an XCell ATF® Device for the B channel then bioreactor configuration and select a configuration ([Figure 24](#)) the ATF Flow Pop-Up and select the desired mode. ([Figure 17](#))

**Note:** Modes can be switched even while the devices are running; it takes one to two full cycles before the new mode goes into full effect.

Figure 19. ATF DUAL Pop-up example

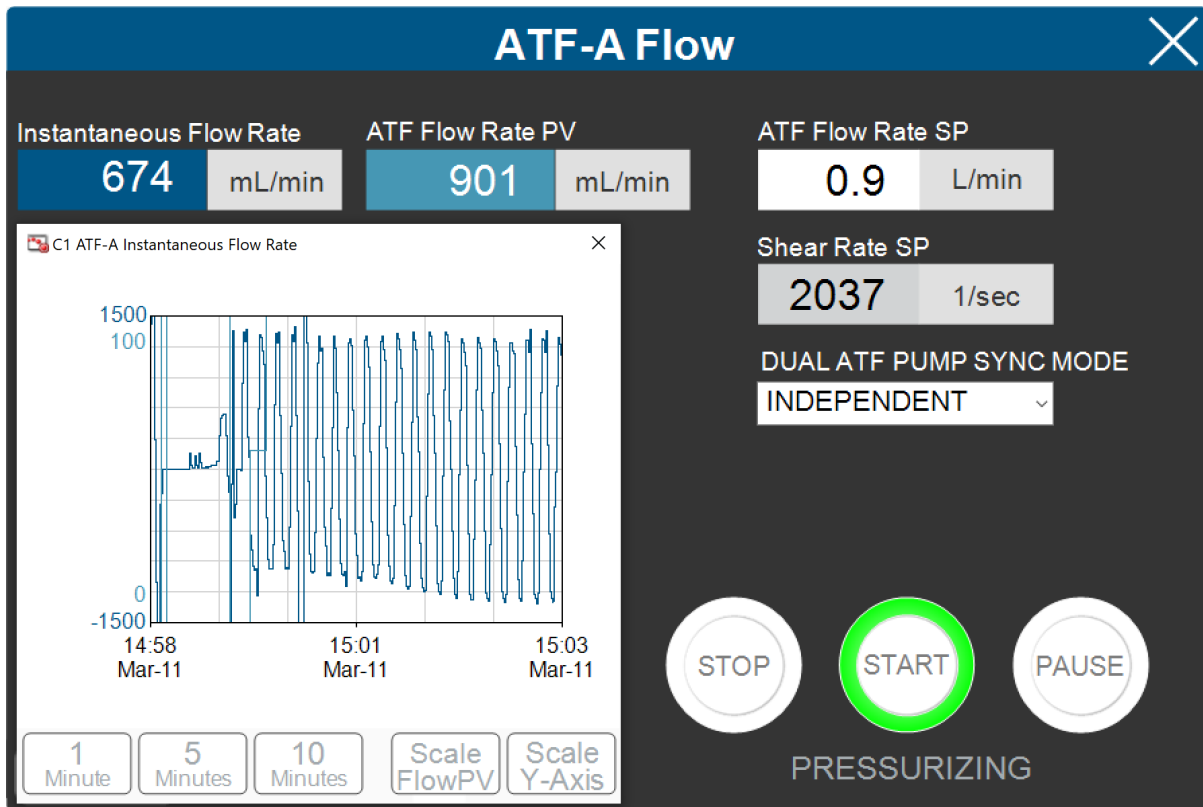


Table 11. ATF modes - independent and dual

Mode	ATF Pump Sync Mode	Explanation
ATF DUAL	Independent	The phase of each XCell ATF® Device runs without dependency on the other.
	In-Phase	The pressure and exhaust strokes of both XCell ATF® Devices occur at the same time.
	Out-of-Phase	The pressure and exhaust strokes of both XCell ATF® Devices occur in an alternating fashion. This is useful to keep a bioreactor volume constant when running two XCell ATF® Devices on one bioreactor and is used most frequently.

**Note:** When two ATFs run independently, the set points can be adjusted in their respective ATF Flow-A or ATF Flow-B pop-ups. When the two ATFs are run In-Phase or Out-of-Phase, ATF Flow setpoints for both the ATF A and ATF B pop-ups are linked and must be the same. Edit the setpoint for both devices at the same time in either the ATF-A Flow and ATF-B Flow Pop-ups.

**Table 12. Starting, pausing and stopping XCell ATF® Device(s) in Dual Mode**

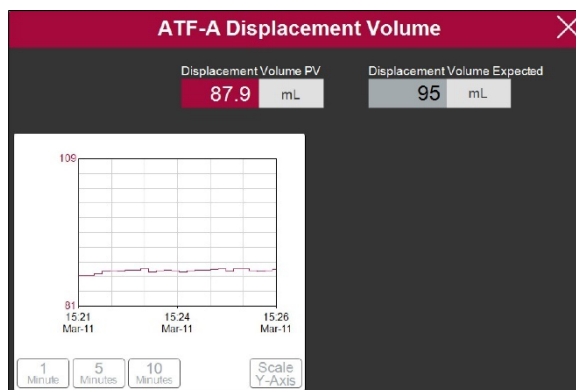
	Actions	
In-phase and out-of-phase	Start	Open either the ATF-A or ATF-B flow Pop-up , select mode for dual control and then press <b>Start</b> .
	Pause	<ol style="list-style-type: none"> <li>1. Software: Open either ATF -A or ATF-B Flow Pop-up and press <b>Pause</b></li> <li>2. Software: Press the <b>All Pause</b> buttons on ATF Main screen</li> <li>3. Hardware: Press either <b>Pause</b> button on controller Face B (Figure 6)</li> </ol>
	Stop	Software: Press the <b>All Pause</b> buttons on ATF Main screen
	Start	<ol style="list-style-type: none"> <li>1. Software: Open either ATF -A or ATF-B Flow Pop-up and press <b>Pause</b></li> <li>2. Hardware: Press either <b>Pause</b> button on controller face B</li> </ol>
Independent	Start	Open the relevant ATF flow Pop-up and then press <b>Start</b> .
	Pause	<ol style="list-style-type: none"> <li>4. Software: Open either ATF -A or ATF-B Flow Pop-up and press <b>Pause</b></li> <li>5. Software: Press the <b>All Pause</b> buttons on ATF Main screen to pause the respective ATF unit (A or B) to pause. For example if the all pause was pressed for ATF B while running in independent mode, then ATF B is paused and ATF A continues to run.</li> </ol> Hardware: Press either <b>Pause</b> button on controller Face B ( <a href="#">Figure 6</a> )
	Stop	Press <b>Stop</b> on the <b>ATF Flow pop-up</b> . Upon re-start, the controller starts without utilizing previous settings. A <b>Stop</b> is recommended to be used only at the end of a run.

**Note:** It is not possible to re-start in dual mode unless both ATFs are paused and re-started together.

**Note:** After pressing STOP, the setpoint value remains the same, which is the only user editable parameter. The most significant difference between STOP and PAUSE is that PAUSE keeps the XCell ATF® Device in a hold position where it can resume when START is pressed a second time. Pressing STOP stops the running session; when start is subsequently pressed it goes through the start initiation process (Priming).

### 7.8.5 ATF displacement volume pop-up window

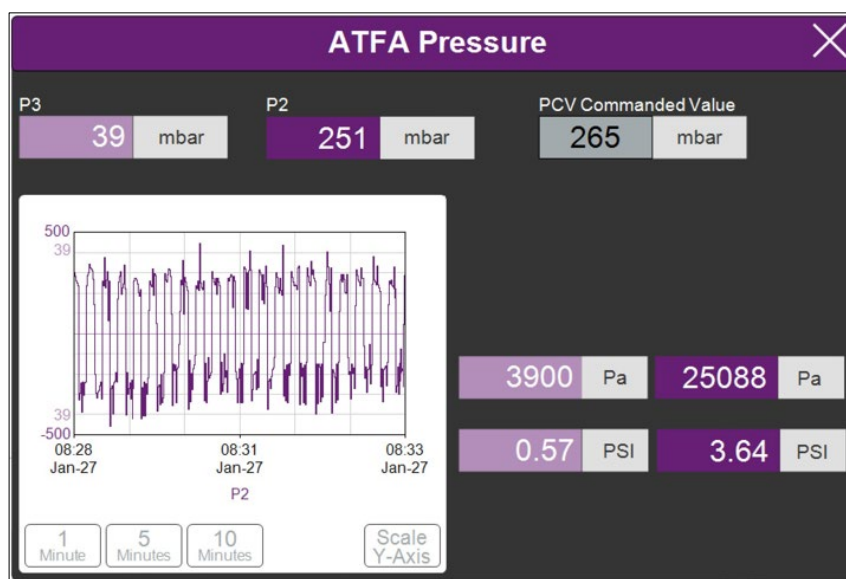
Figure 20. ATF displacement volume pop-up example



The ATF displacement pop-up (Figure 20) displays the measured and expected displacement volume per cycle. A 5-10% variation between the two is typical. No changes are allowed on this screen, however it is possible to set-up an alarm for this value.

### 7.8.6 ATF pressure pop-up window

Figure 21. ATF pressure pop-up screen example



The ATF Pressure pop-up (Figure 21) displays the measured pressures in the permeate line (P3), the A2C line (P2) and the PCV Set point for P2 (PCV commanded value). You may change the units of the values displayed on the **ATF Pressure pop-up** and the **ATF Main Screen** (in the **Settings** menu), but the values logged into the **Historian** are always ‘mbar’, which is shown at the top of the pop-up.

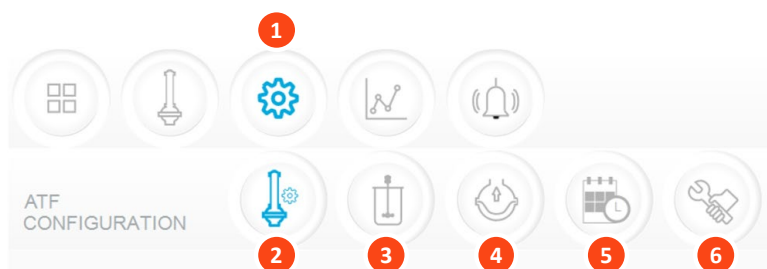
P3 pressure is typically either zero or negative. As permeate flow increases, the pressure (P3) drops. If the filter starts to foul, P3 is also expected to drop. P3 is a process-dependent value; no lower limit for alarm set-up has been established.

You may choose to alarm P3 via the Alarm Settings if it is critical for your process. Alarms for P2 are automated and cannot be changed by the user. [Alarms](#) are described in more detail later. Please contact your local FAS to discuss appropriate values and alarms settings.



### 7.8.7 Settings sub-menu

Figure 22. Settings sub-menu example



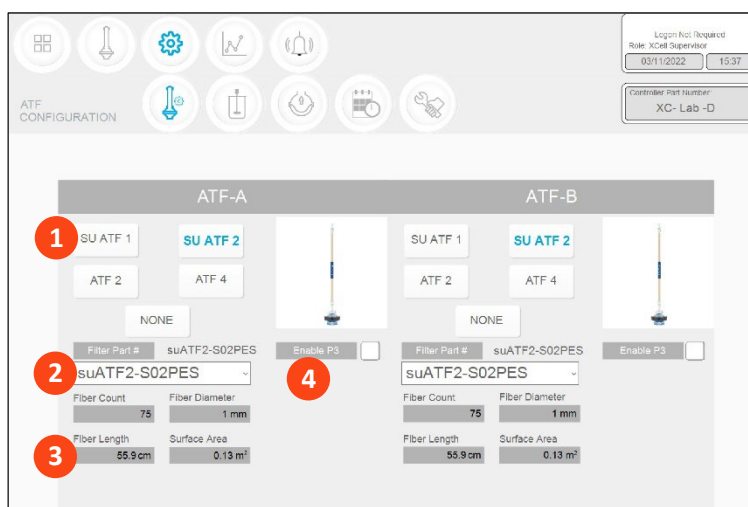
1. Settings
2. XCell ATF® Device Configuration
3. Bioreactor Configuration
4. Default Configuration
5. General Configuration
6. Service/Performance

The settings sub-menu ([Figure 22](#)) displays the options available to customize the device, bioreactor, controller, and software settings.

### 7.8.8 XCell ATF® Device configuration

Figure 23. XCell ATF® Device configuration example

1. XCell ATF® Device size, format
2. Filter P/N (dropdown)
3. Default filter settings
4. Enable/disable P3 sensor



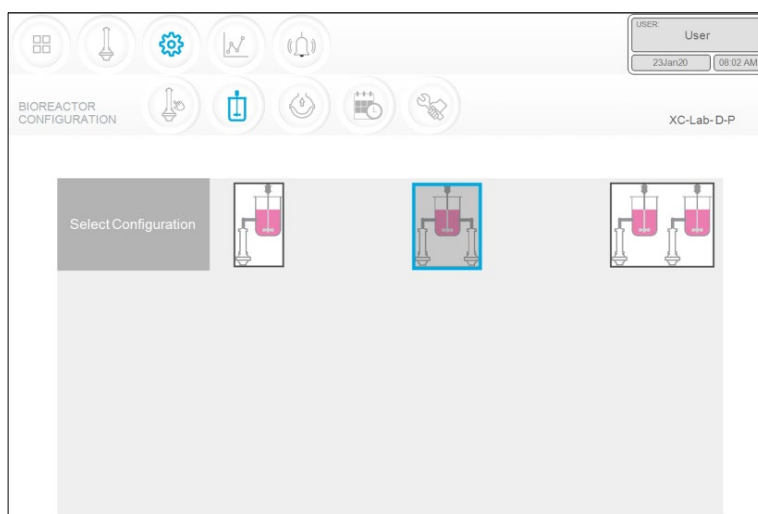
The XCell ATF® Device configuration sub-menu ([Figure 23](#)) allows selection of the XCell ATF® Device(s) with a single click. Selection of a device opens default values and displays an image of the chosen device. To run only one device with the **D** or **D-P** controller models, select **NONE** for the other; device and the graphic will be removed from the device image appears blank. The **ATF Main** screen will be updated as well.

Once an XCell ATF® Device selection is made, a filter part number can be selected from the drop-down list. This enables the system to display the correct physical characteristics of the chosen filter (shown below in grey), which is crucial for scale-up calculations.

**Note:** Uncheck the P3 box when not in use to avoid alarms due to lack of communication with the P3 sensor.

### 7.8.9 Bioreactor configuration

Figure 24. Bioreactor configuration example



For the **S** controller configuration, you will only be able to choose the first option with one device (Figure 24). With a **D** or **D-P** model model controller, enabled controller, you may choose the, all three options are available; select the one that matches your lab setup (Figure 24).

### 7.8.10 Default configuration/ATF pump settings

Figure 25. ATF pump settings example

The screenshot shows the 'DEFAULT CONFIGURATION' screen. It features a navigation bar with icons for home, bioreactor, settings, graphs, and alerts. The user information 'Logon Not Required', 'Role: XCell Supervisor', and date '06Apr20 13:23' is displayed in the top right. Below the navigation bar, the screen title is 'XC-Lab-D-P'. The main area contains a table of ATF pump settings.

SIZE	PUMP DISPLACEMENT	ABSOLUTE MIN FLOW	ABSOLUTE MAX FLOW	DEFAULT FLOW	
SU ATF1	17.0 mL	70 mL/min	200 mL/min	140 mL/min	
SU ATF2	93.5 mL	0.3 L/min	1.5 L/min	0.9 L/min	
ATF2	93.5 mL	0.3 L/min	1.5 L/min	0.9 L/min	
ATF4	411.0 mL	1.5 L/min	8.0 L/min	6.5 L/min	RESET to default

The Default Configuration menu (Figure 25) displays the ATF pump settings, which includes: expected pump displacement, minimum flow, maximum flow and default flow.

These settings can be changed by clicking the relevant box and entering in a new value. **Default flow** represents the most frequently edited parameter and is typically set to the flow rate used in most of your processes.

A Supervisor or Engineer may choose to restrict user input to a specific range of allowable flow set points by providing minimum and maximum flow values. For example, any flow rate between 70 ml/min to 200 ml/min can be used when running an ATF1 device. However, depending on your

scale-up and process knowledge, the Supervisor or Engineer may choose to limit all users to a range of 140-180 mL/min, for instance, by specifying those as min and max flow values.

You would likely not need to change the pump displacement value. The displacement value is integrated in the control algorithm; therefore, we recommend consultation with your local FAS, prior to editing. Modifications to the pump displacement value can cause some variations in performance.

### 7.8.11 General configuration

Figure 26. General configuration example

The screenshot displays the 'GENERAL CONFIGURATION' menu. At the top, there are navigation icons and a user status box showing 'Login Not Required', 'Role: XCell Supervisor', and the date '06Apr20' and time '13:24'. Below this is a 'Controller Part Number' field with the value 'XC-Lab- D-P'. The main configuration area consists of several rows of settings:

- Date Format:** Four buttons: 'mm/dd/yyyy', 'dd/mm/yyyy', 'yyyy/mm/dd', and 'ddMmmyy' (selected).
- Time Format:** Two buttons: '12 hr' and '24 hr' (selected).
- Pressure Units:** Three buttons: 'PSI', 'mbar' (selected), and 'Pa'.
- Auto Logout:** Three buttons: 'Off' (selected), '1 Minute', and '10 Minutes'.
- Auto Restart:** Two buttons: 'On' and 'Off' (selected).

The General configuration menu (Figure 26) allows customization of date and time formats, pressure units, auto logout and auto restart settings.

**Note:** The displayed units can be changed by the user, but the permanent logged data cannot.

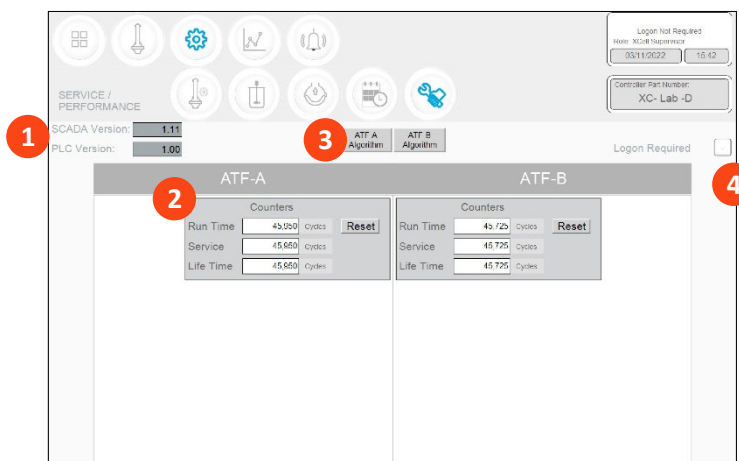
**Auto logout** is turned off by default. It is the preferred default setting for a Lab environment. If you have multiple users in the facility and are concerned about accidental changes, we would advise you to turn on this security feature by choosing 1 Minute or 10 Minutes. Enabling auto logout requires the use of a password to log back in after the specified time period.

The auto restart is a useful feature to manage an accidental power outage. The controller displays an alarm when the power is lost unexpectedly. If **Auto Restart** is enabled, when power is restored, the controller re-starts and continues to run with the settings used previously. This feature is useful only if your bioreactor also re-starts, and the duration of the power outage is small. If you prefer to have the equipment re-started manually after a power loss, you should turn **Auto restart** OFF.

### 7.8.12 Service /performance screen

Figure 27. Service/performance example

1. SCADA and PLC version
2. Counters
3. XCell ATF® Device algorithm
4. Logon Required – on/off



The Service/performance screen (Figure 27) displays the software versions, XCell ATF® Device algorithms, counters (Table 13) and security status. It is useful for both users and Repligen engineers.

Table 13. ATF service parameters

Counter name	Description	Can be reset?
Run time	Number of cycles a diaphragm or device has completed since the last reset. Can be reset for every run.	Yes, by Operator
Service	Number of cycles completed since the last preventative maintenance or service or calibration.	Yes, only by Repligen FSE
Lifetime	Number of cycles performed by the controller during its lifetime	No

### 7.8.13 Logon required - security on/off

If the **Logon Required** box (Figure 27) is left unchecked, no password is required, and each user has equal and full access (equivalent to a **Supervisor** level) to the XCell™ Lab Software. If the Logon Required box is checked off, users need to log on, enter credentials to access the XCell™ Lab Software; however, no Windows login is needed. In some R&D environments, leaving the logon box unchecked may simplify daily task execution, yet in other situations it may be critical to have security enabled. For additional security, timed auto-logout can be enabled in the **General Configuration** settings.

7.8.14 Algorithm pop-ups

Figure 28. ATF-A Algorithm pop-up example



Clicking the **Algorithm** button displays a pop-up (Figures 28, 29), which shows various flow/pressure signals while the controller is running. This screen displays various signals and messages. It is not advisable to judge the algorithm performance without significant training and experience since the data can be misinterpreted. This screen is used by Repligen FAS during troubleshooting. Please consult a Repligen FAS if you suspect your XCell ATF® Devices are not working satisfactorily.

**Note (for control engineers):** A suitable comparison would be to consider the algorithm to be a series or matrix of PID algorithms combined in some interrelated relationship throughout the pump cycle, with the calculations or conclusions from these interactions displayed here. Tuning the algorithm is non-trivial.

You can display one or both algorithm pop-ups at the same time, and easily switch between them. You may touch the screen or use the touchpad to move the pop-ups around. You do not need to exit the pop-ups (by clicking X) each time. If you navigate to the Main menu, the algorithm pop-ups will close automatically.

**Note:** If you have a question or issue, take a photo or video of one or both pop-ups to facilitate resolution.

Figure 29. ATF-A and ATF-B algorithm pop-ups



## 7.9 Trend screen options

Two trend or graphing utilities are available. First, the [XCell™ Lab Trend](#), is located within the main program while the second, Trend (or Wonderware Trend), is in a part of the separate standalone Windows® application. XCell™ Lab Software Trend screen likely will meet the vast majority of run time analysis and diagnostic requirements. XCell™ Lab Trend has been designed for simplicity and quick touchscreen-based user interaction. The [Trend](#) tool provides a deeper dive into current and historical data. It is not as straightforward as the XCell™ Lab Trend; however, a touchpad is provided for use.

### 7.9.1 XCell™ Lab Trend screen

Figure 30. XCell™ Lab Trend screen example



The XCell™ Lab Trend screen displays flows, pressures and displacement volumes for each XCell ATF® Device ([Figure 30](#)). By clicking on the various buttons, you can select and simultaneously display multiple parameters. The buttons are colored if selected and greyed if not. Graph line colors are predetermined and cannot be modified.

Data can be displayed and analyzed by going back in time for a selected time interval. To explore a variety of time intervals, click **SHOW OPTIONS**. All available time intervals are displayed at the bottom of the screen and can be selected by clicking the appropriate button, which then appears blue when active. As an example, [Figure 30](#) displays data in a window of the last 60 minutes. Viewing data options always describe the interval between the current time and a selected interval. Selection of a time interval between two points in the past is not supported.

### 7.10 Alarm categories/types

The controller has alarms available at both the user level and system level. A complete list of Alarms is provided in [Appendix C](#).

#### User-defined alarms

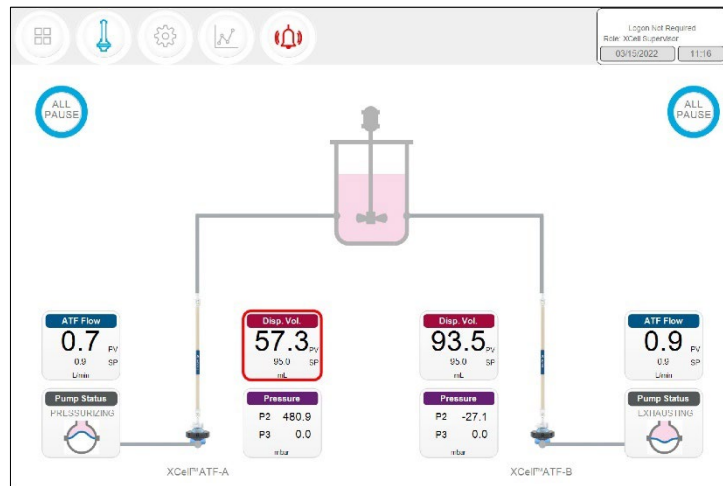
User-defined alarms allow you to change the limits that trigger the alarm as well as the actions taken when an alarm is triggered. These alarms generally cover process values and can be set-up in the [Alarm Configuration](#) screen.

#### System alarms

System alarms cannot be modified. These are hard-coded and may not be modified by the user. System alarms serve the underlying core functions of the controller, (e.g. the presence of a sensors or loss of utilities etc.).

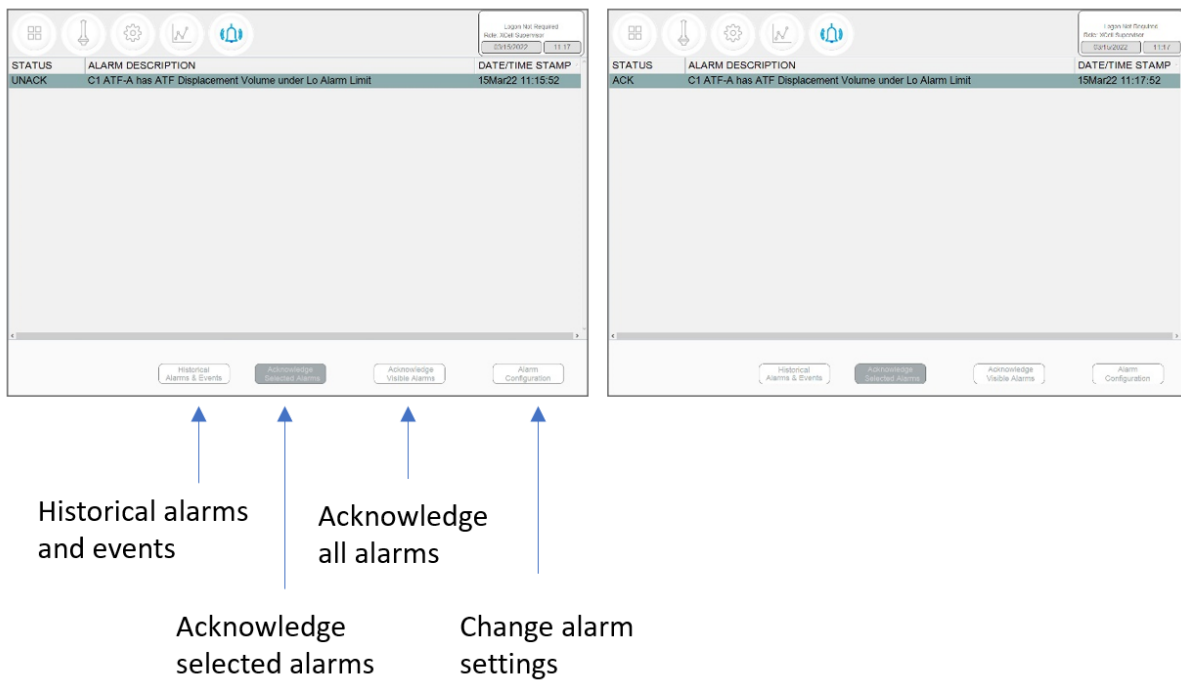
7.11 Alarms screen

Figure 31. Alarm condition example



If an alarm has occurred, even if briefly and then returned to normal, the **Alarm menu** button will flash red (Figure 31). The alarm may be reviewed by the user at their convenience when this icon is displayed. If an alarm is active, a red box will surround the displayed variable. As an example, an alarm for Displacement Volume on ATF-A is shown in Figure 31.

Figure 32. Alarm status



Pressing the **Alarm** menu opens the **Alarm screen** (Figure 32). Alarms are displayed until acknowledged by the user. Table 14 explains the alarm status messages you may encounter. A full list of alarms is provided in Appendix C.

**Table 14. Alarm status**

Alarm status	Explanation
UNACKN	An unacknowledged alarm
UNACK_RTN	An unacknowledged alarm, which has returned to a non-alarm state
ACK	An alarm acknowledged by the user
ACTIVE	A current alarm state

### 7.11.1 Alarm Configuration

**Figure 33. Alarm Configuration example**

1. Tabs
2. Commands
3. Reset to default values

ALARM	ENABLE	LIMITS	UNITS	DELAY (sec)	PAUSE	STOP	LIGHT	HORN
HiHi	<input checked="" type="checkbox"/>	25.0	%	1	<input type="checkbox"/>	<input type="checkbox"/>	<input checked="" type="checkbox"/>	<input checked="" type="checkbox"/>
Hi	<input checked="" type="checkbox"/>	10.0	%	30	<input type="checkbox"/>	<input type="checkbox"/>	<input type="checkbox"/>	<input type="checkbox"/>
Lo	<input checked="" type="checkbox"/>	10.0	%	30	<input type="checkbox"/>	<input type="checkbox"/>	<input type="checkbox"/>	<input type="checkbox"/>
LoLo	<input checked="" type="checkbox"/>	25.0	%	1	<input type="checkbox"/>	<input type="checkbox"/>	<input checked="" type="checkbox"/>	<input checked="" type="checkbox"/>

The alarm configuration pop-up (Figure 33) has four tabs. The commands row matches the color of the active tab, indicating the active Alarm tab. As an example, Figure 33 displays ATF Flow tab as active.

### 7.11.2 ATF Flow alarm configuration

Four different alarm options are available for **ATF Flow** (Figure 33): **HiHi**, **Hi**, **Lo**, **LoLo**. You can select the alarm type, parameter limit, and delay time. Simply uncheck the relevant box to turn off an alarm. Flow alarms apply to all the ATF sizes and formats the controller can operate and are not limited to the specific XCell ATF® Devices configured at the time the alarm is set.

Flow alarms are compared to the flow set point. Alarms are triggered when the flow set point is exceeded or reduced by the specified limits. For example (Figure 33), if the **ATF Flow** has a Setpoint of 0.7 LPM, then the **Hi** 10% and **HiHi** 25% alarms would be triggered when the ATF Flow PV is  $\geq 0.77$  LPM and  $\geq 0.875$  LPM, respectively.

The **Hi** and **Lo** triggers are set at 10% in this example. If the ATF Flow equals or surpasses the 10% limit (0.63 LPM or below for Lo, 0.77 LPM or above for Hi) in either direction, the relevant alarm would get triggered.

Occasionally, alarms may be caused by trivial events such as noise or a mistake (human or otherwise), which do not justify triggering actions that may include stopping the operation. The **Delay** timer feature manages this situation. A 30 second **delay** timer requires that the alarm be present for full 30 seconds after the first detection, for the alarm to display on the **Alarms screen** and to trigger action.

The last four columns show actions the controller can take if an Alarm is triggered. Each box and check box have a preset default value, which you may return to at any time by clicking the **Reset to Default** button.

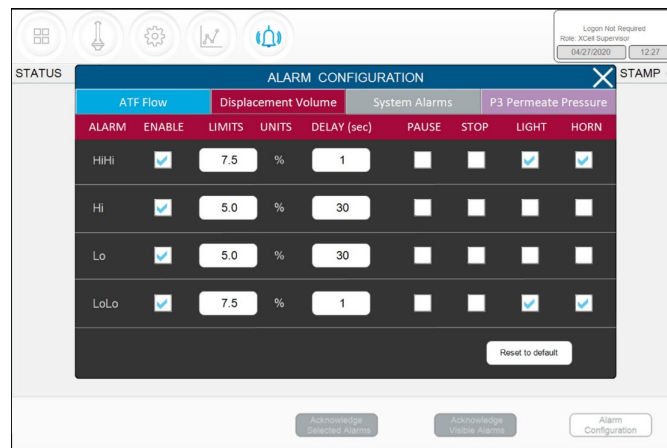


**Note:** Pausing or stopping the controller requires manual interaction to re-start the operation. Application of pause or stop as an action should therefore be carefully planned especially in case the alarms get triggered at an unattended moment.

### 7.11.3 Displacement volume alarm configuration

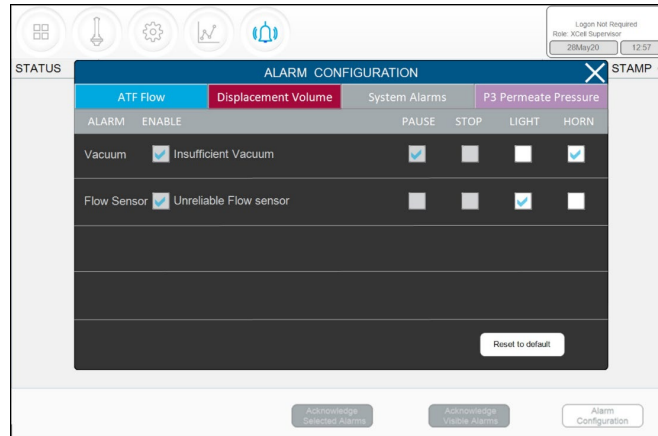
Like **ATF Flow**, the **Displacement volume** alarm configuration (Figure 34) has a layout, and functionality similar to **ATF Flow**. Like **ATF Flow**, the values on the selections apply to all ATF sizes and formats the controller can operate.

Figure 34. Displacement volume alarm example



### 7.11.4 System alarm configuration

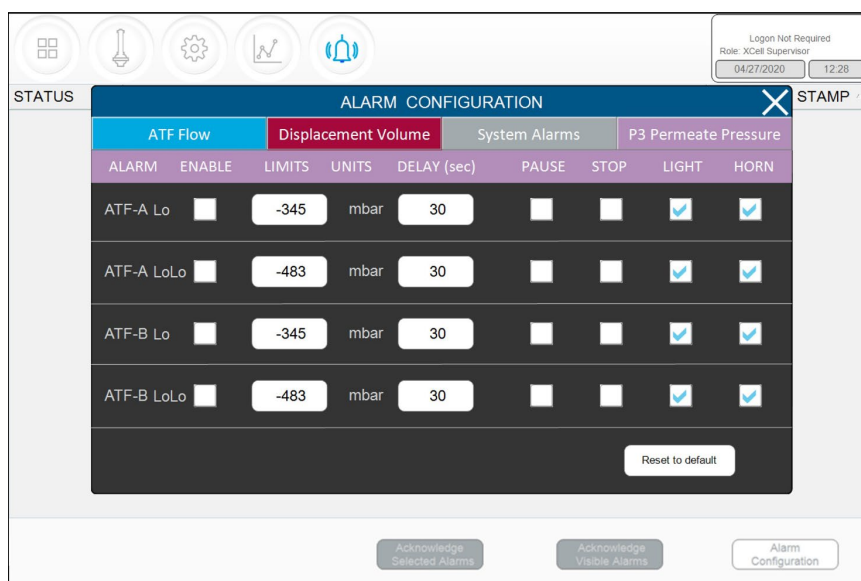
Figure 35. System alarms example



Two System Alarms are available in the Systems Alarms tab (Figure 35): vacuum and flow sensor. Neither the system alarm itself nor the triggered action may be disabled by the user (checkboxes are greyed out). System alarms are therefore shown for informational purposes only. For instance, the vacuum alarm pauses the ATF when detected. You can, however, choose whether a light and/or horn alarm should be triggered in each case.

### 7.11.5 Permeate (P3) pressure alarm configuration

Figure 36. P3 permeate pressure alarm example



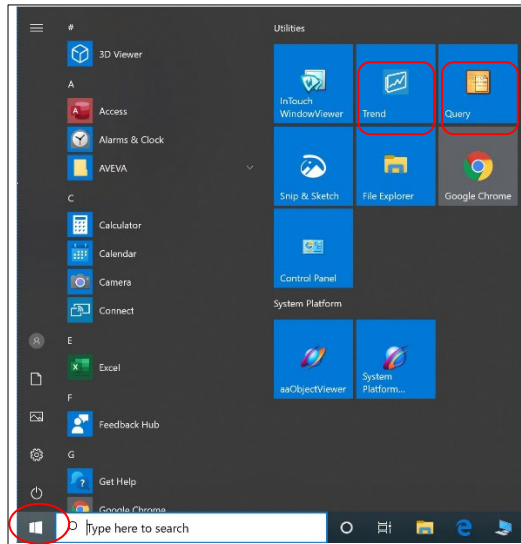
The layout of the **P3 alarm** configuration screen is very similar to other alarm screens. However, there are some notable differences. The permeate pressure (**P3**) alarms (Figure 36) are unique to each XCell ATF® Device and sizes. P3 alarms for ATF-A and ATF-B may also be set independently of one another. Note that because permeate pressure will decrease with membrane fouling, **Hi** or **HiHi** do not apply; only **Lo** and **LoLo** options exist within the P3 pressure alarm tab. In addition, permeate pressure is compared to the limit shown on this screen (not to a set point). Due to the variety of processes in which the XCell ATF® Systems are employed in the industry today, operating values for permeate pressure (**P3**) span a wide range. P3 pressure value is process dependent and there is no established limit. Please ensure P3 alarms are set up correctly for each run if P3 sensor is used. Our recommendation is to set the **Lo** at a point where, for one specific process, it would trigger a **Light** and or a **Horn** warning at the first indication of filter fouling. Indications of fouling can be documented during development runs by sampling between the retentate and the permeate streams. The P3 alarm indicates the point where swapping should be considered. The **LoLo** alarm may then be set to a point at which filter replacement is deemed urgent and critical.

### 7.12 Historian, Trend and Query applications

The tablet includes three Wonderware tools for additional functionality. These applications help you get up and running quickly with a point-and-click interface to access, analyze, and graph data (both current and historical). These tools can be accessed by all XCell™ Lab Software users and do not require any programming or database knowledge. A touchpad is provided for ease of use.

To access these applications, start with the Windows button or swipe right on the tablet to open the Start menu with tiles on the right (Figure 37). You can select **Trend** or **Query** or select **InTouch Window Viewer** to return to the XCell™ Lab software. Swiping right again closes the start menu and displays all open applications.

Figure 37. Accessing Trend and Query example



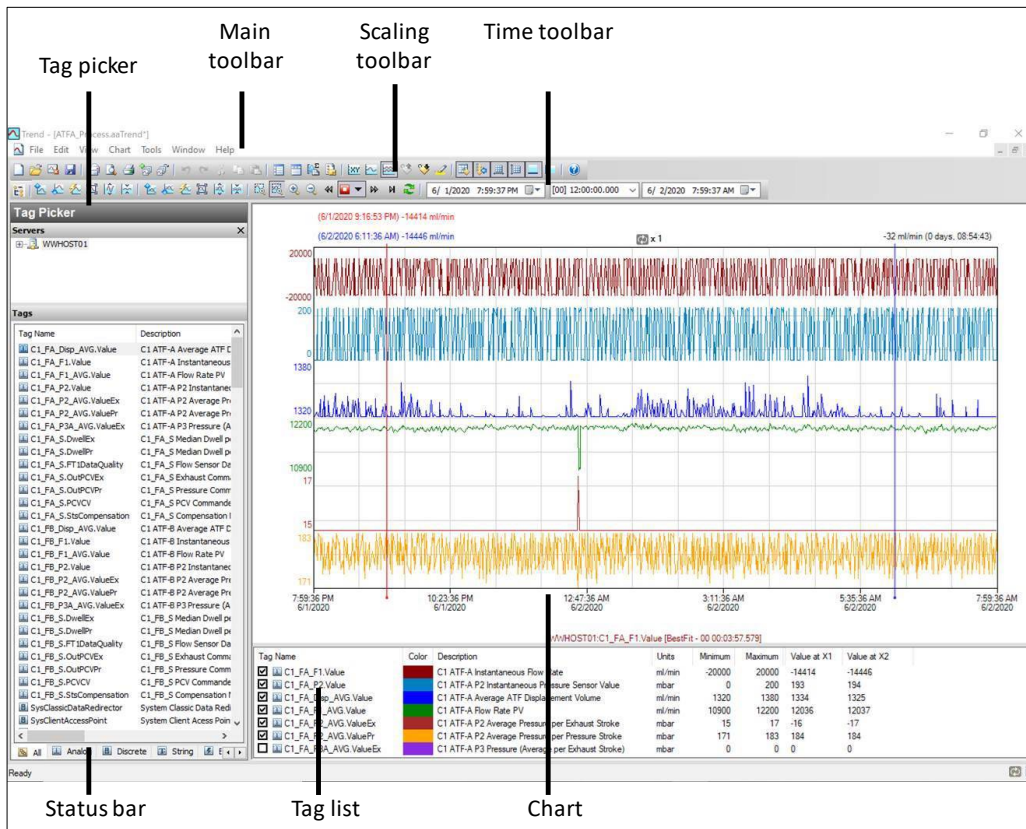
### 7.12.1 Historian Client Software

Wonderware Historian, a relational database that acquires and stores process data at full resolution, always runs in the background, providing real-time and historical data. Historian combines the power and flexibility of a Microsoft® SQL Server with the high-speed acquisition and efficient data compression characteristics of a real-time system.

The Historian enables queries that can retrieve relevant data more efficiently from the database. Historian is stored locally; no remote access is allowed.

### 7.12.2 Trend

Figure 38. Trend screen example



The Trend application lets you query tags (data points or logged variables) from the Wonderware Historian database and plot them. When you start the Trend application for the first time, you are immediately prompted to connect to a Historian server. If you are opening an existing Trend file that includes at least one server configuration and the login was successful, you are not prompted to log in. It comes with 4 preconfigured trend files for your convenience.

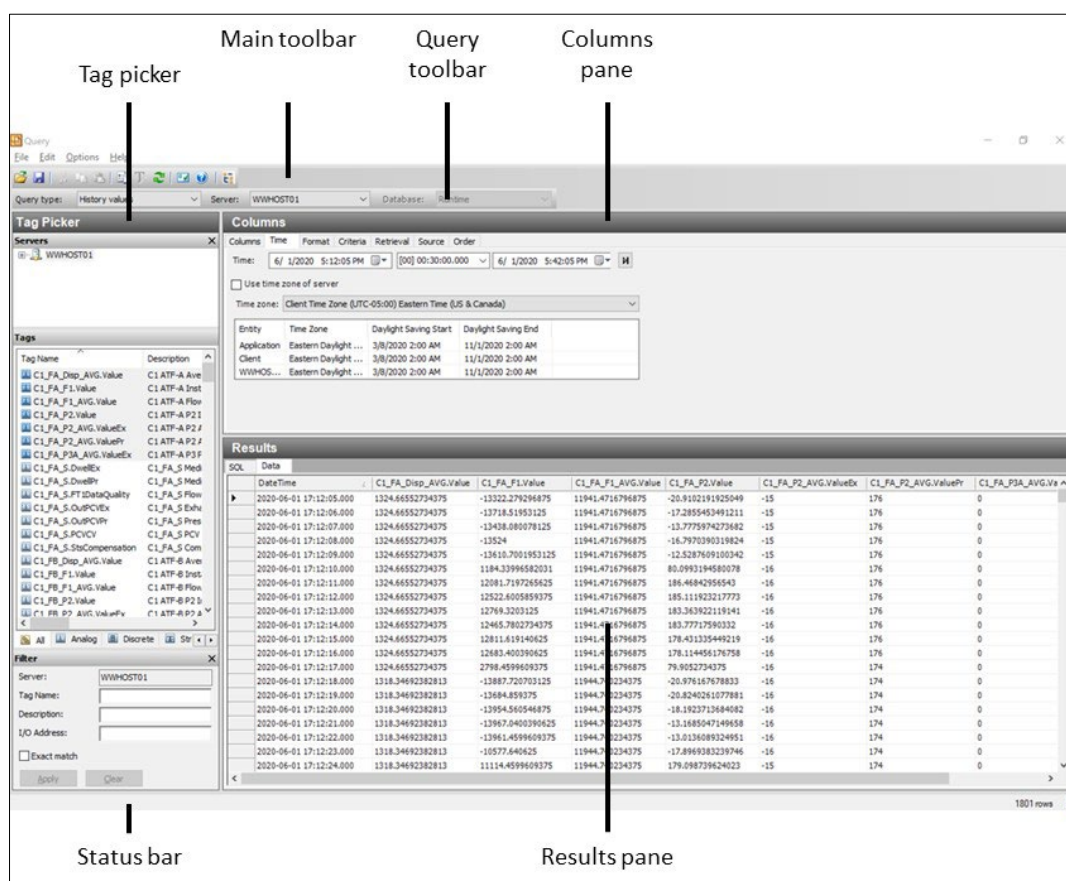
In order to simplify the setup, Repligen has pre-configured several options and configurations for you. For example, the tags are pre-loaded, and the screen layout has been optimized for viewing.

Trend supports two different chart types: a regular trend curve and an XY scatter plot. Multiple plot configuration and display options are available (Figure 38), and it is easy to save preferred layouts for future use.

For more information on using tag picker and time picker tools, please see Section 7.12.

### 7.12.3 Query Tool

Figure 39. Query example

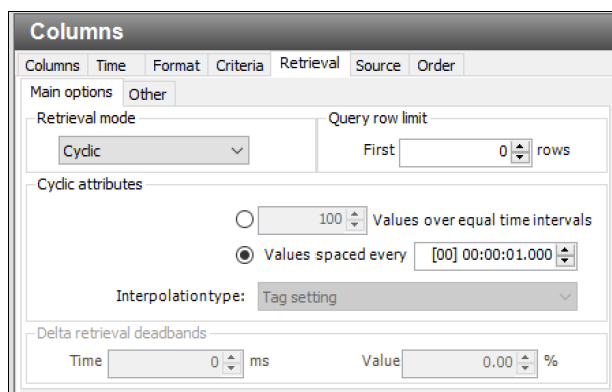


### 7.12.4 Exporting data to Excel

To export data:

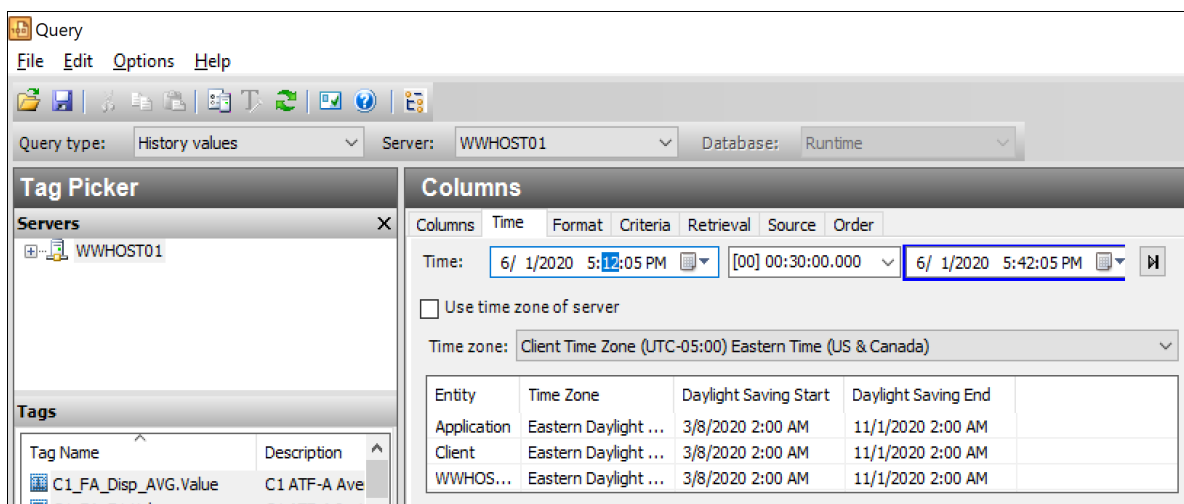
1. Select **History Values** from the **Query type:** drop-down menu (top left, Figure 39).
2. In the **Columns Pane** (Figure 40), go to the **Format** tab, select the **Wide query format**.
3. In the **Columns Pane**, go to the **Retrieval** tab, select **Cyclic** from the retrieval mode drop-down. For **Cyclic attributes**, select **Values spaced every select 1 second** (as shown below).

Figure 40. Columns pane - subset of the Query window



4. Go to **Tag Picker** section, select the tags (i.e. the data points) to populate the **Results Pane**.
5. Go to the **Columns Pane**, select the **Time** tab, and choose the start time and duration using a drop-down menu or by manually entering it ([Figure 41](#)).

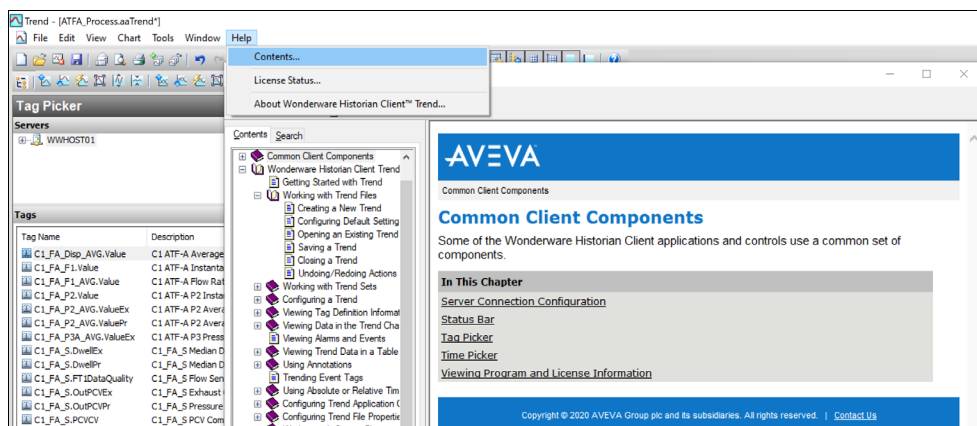
Figure 41. Query set-up



- Loading each new tag takes time. To speed up the process, set-up a quick query by selecting a short time interval (say 5 minutes), followed by selection of multiple tags, and then increasing the time interval to the desired duration.
- Press the **Save** button, select a filename and specify the storage location for your data.
- Copy data from the Surface Pro hard drive to a USB drive in .csv format which can be imported into Microsoft® Excel® for further processing.

## 7.13 Help section

Figure 42. Help feature



The Help/Contents section ([Figure 42](#)) offers a good resource to learn more about Trend, Query and Historian applications.

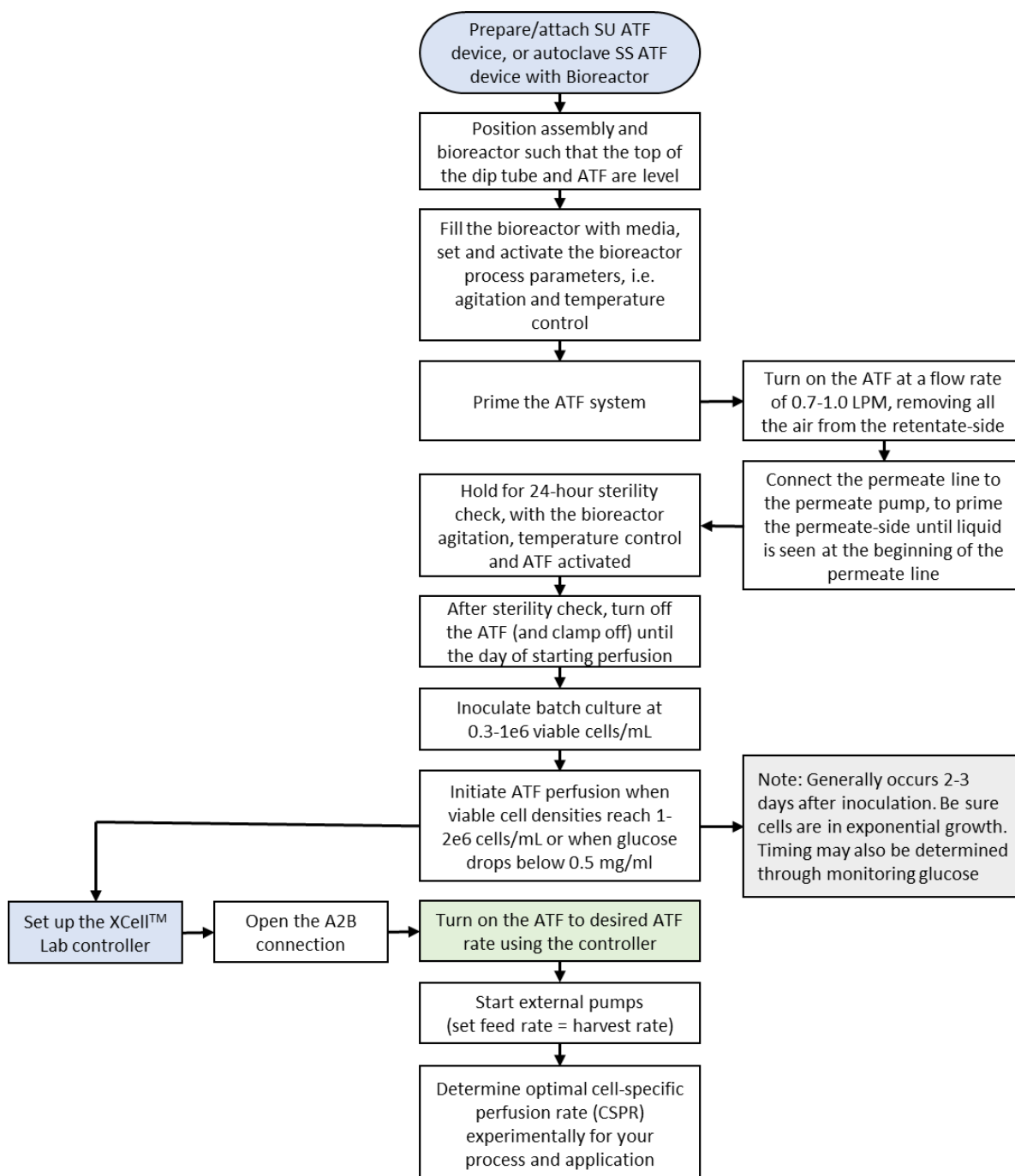
For information on using the **tag picker** and the **time picker** tools, please see **Common Client Components**. To show or hide toolbars or components, use the corresponding commands in the **View** menu.

## 8. Running the system

This section provides general guidelines for starting up and operating a bioreactor and XCell ATF® Device.

### 8.1 Process workflow

Figure 43. Workflow for a typical ATF start-up process.



### 8.2 Selection of ATF flow rates

Generally, higher ATF flow rates increase backflush efficiency and extend filter life. However, the optimum ATF rate depends on the cell line requirements.

- **Type of cell line used:** Fragile cell lines or cultures inoculated at low cell concentration may require gentle start-up using low ATF rates. As cells begin to grow and adapt, flow rates can be increased (i.e. to characterize the cells shear sensitivity).  
When a less shear-sensitive cell line is used, higher ATF rates may be used.

**Note:** ATF2 is unique since it is capable of a maximum flow rate of 1.5 LPM, yet for scale-up considerations, ATF2 rate should not exceed 0.9 LPM. Please refer to Repligen's Engineering Scale-up Guide for additional details, which is available from your local FAS.

- **Harvest or filtration rate:** Generally, higher filtration rates require higher ATF flow rates. The maximum filtration rate depends on the size of the filter relative to the process conditions, while the minimum filtration rate depends on the requirements of the cell culture. If the filtration rate is too high compared to the ATF Flow Rate, the filter would likely foul faster. General guidelines for ATF Flow rate and Filtration rate ratio are shown in the table below.

**Table 15. Recommended ATF rate to Filtration rate ratios**

Application	ATF Rate Ratio	Filtration Rate Ratio
Perfusion (> 30d) or CFB	100 - 200	1
High Productivity Harvest	50 - 150	1
N-1 Perfusion, or Cell Expansion	50 - 100	1
Short Duration Diafiltration	10 - 50	1
Rapid Media Exchange, Clarification or Cell Concentration	10 - 50	1

**Note:** Many factors influence the optimum ATF Rate as well as the ratio. The default settings work for most applications, but please feel free to contact your local FAS to discuss your unique process needs.

## 9. Troubleshooting

If your issue is not listed or resolved in the following scenarios, please contact the Bioprocess Account Manager as the first point of contact.

Refer to [Appendix C](#) for a comprehensive list of alarms and their triggers, which can be helpful in troubleshooting.

### Controller will not turn on

Make sure the power cord to the controller is connected properly and fully inserted into a power outlet.

### The HMI is not communicating with the controller

Check if the ethernet cable is properly connected to the USB/ethernet adapter, and the USB/ethernet adapter connected properly to the tablet.

The IP address may be incorrect, please see [Appendix B](#) for instructions.

### ATF Flow rate is higher/lower than expected

The controller is accurate to at least within +/-10% of the setpoint. If the flow consistently exceeds this range, a correction must be made:

1. Incorrect flow measurement. This could be due to sensor placement on the tube, use of incorrect tubing or presence of large air bubbles in the A2B line (see below). Please check if each of these are working properly.



2. Insufficient utilities. Repligen provides vacuum pumps suitable for multiplexing, however there is a limit that depends on the number and size of devices. Please check the utility lines and connections for leaks.
3. A2C line leaks. The A2C line may not be connected correctly to the air filter at each end or it may be leaking. Check connections and tighten parts.
4. Device leakage. An air leak on the air side of the device can happen at points where steel to steel or steel to plastic connections are not properly threaded together.
5. The dip-tube is higher than the liquid level, or the incorrect dip-tube is being used leading to insufficient liquid being drawn into the XCell ATF® Device.
6. The bioreactor does not have a sufficiently large exhaust gas line or filter-or the filter is wet and blocked. Bioreactors built for standard fed-batch operation have filters and exhaust lines that are too small for the combined needs of higher oxygen demand and ATF flow. In addition, evaporation increases during ATF. We recommend oversizing the exhaust line and, in some cases, having two lines with one in place as a backup. If water regularly causes blockages, heating the filter can help.

If the value reported by the controller is within the far end of the 10% range, without moving closer to the desired setpoint, then the system is operating within specification. Stopping and starting the XCell ATF® Device or changing the setpoint to a different value for a few minutes (and then returning to the original value) might help bring the flow within the middle of the 10% range.

#### **Too many air bubbles inside the A2B tubing**

To remove large air bubbles mid-run, the XCell ATF® Device can be lowered slightly, and the ATF Flow can be increased for several minutes - before returning values to their baseline levels. To avoid large air bubbles, place the dip tube or entry point for the A2B line as far away from the sparger as possible.

Small bubbles, even if numerous, should not impact sensor or controller performance.

#### **Permeate flow too low or negligible**

Upon first starting the permeate pump, time should be allowed for priming to complete (i.e. draw liquid through the dead volume in the filter module and out to the permeate side). If the cell concentration is low, you may increase the permeate pump 10x in order to accelerate the priming process. If mid run, check the P3 pressure profile and inspect the filter for clogging.

#### **A2B flow sensors not communicating**

Confirm cables are connected properly.

#### **Displacement Volume alarm does not make sense**

This can happen when the system starts up and there is a mismatch between the filter size configured and the expected value of displacement volume. To resolve this issue, navigate to the **Settings** page where default values are displayed and modify one of the expected displacement volumes. A good example is to set the displacement volume value for ATF4 to 410 instead of 411. Alternately, pressing the reset to default button also solves the issue.

#### **Displacement volume too low**

The displacement volume varies slightly (up to 10%) from the expected value before the controller takes action. If the value is lower and outside the range but the ATF Flow is working correctly, then there is an error and you should contact Repligen.

#### **Flow control used to be stable but is not stable or accurate anymore**

This could be because PCV command value (PCVcmd) is not closely tracking P2, meaning the valve is not responding correctly to the control output. Dust may be trapped inside the valve, causing it to stick or react in a jolting fashion; a service is required on the equipment.

**Flow control is random for the first minute or so of operation**

Startup includes this expected behavior. When the controller first starts, it performs an initialization routine that has periods of no flow and periods of irregular flow, in order to determine optimum settings for your configuration.

## 10. Maintenance and service

The XCell™ Lab System design is robust and intended for use with other process and lab equipment. The frame, cabinet, and sensors can be cleaned by wiping down surfaces with mild cleaning agents and/or warm water, a damp cloth or lab wipes. The display should be cleaned with computer screen cleaner and computer screen wipes.

All repairs of the system must be performed by a qualified Repligen service engineer. Opening of the system and attempted repair by the user or third party shall void the product warranty.

An annual preventative maintenance is strongly advised to ensure equipment stays in prime condition and that performance is not affected. Failure to do so could lead to detrimental cell culture results.

### 10.1 Ongoing service and support

Repligen provides a range of service and support options to ensure your system is reliable and performs optimally.

- Preventative Maintenance (PM)
- Comprehensive Service Contracts
- Technical Support
- User Training
- Applications Support

A PM or service visit by our engineer would include verification and adjustment of the following key components as necessary:

**PCV valves:** These are finely tuned pneumatic valves that must be kept clean and calibrated for proper operation.

**P2 sensor:** This is linked to the PCV valves and any drift or noise will cause performance problems and must be rectified.

**Controller filter:** This should not be removed or replaced when vacuum is running, even in a clean room. An annual change is recommended for typical use.

For more information on spare parts, service and support, please visit our website [www.repligen.com](http://www.repligen.com) or email: [customerserviceUS@repligen.com](mailto:customerserviceUS@repligen.com)

## 11. Appendix A Controller, device and system parts and specifications

For detailed device and system specifications please refer to the Specification Sheet available [online](#) on our website.

**Table 16. XCell™ Lab System Price and Parts List - for Sales**

Category	Description	Part Number
Controllers and Software	XCell™ Lab Controller, single ATF	XC-LAB-S
	XCell™ Lab Controller, dual ATF	XC-LAB-D
	XCell™ Lab Controller, dual ATF with permeate pressure	XC-LAB-D-P
	HMI tablet, software and accessories kit	XC-LAB-HMI-KIT
	XCell™ Lab PLC executable chip, Dual System upgrade	XCS-LAB-D-PLC-CHIP-V1.0
Hardware and Accessories	Head plate fitting (HP) for XCell ATF® 1, M10 fitting	HP-ATF1-6-M10
	HP for XCell ATF® 1, PG13.5 fitting	HP-APP-M19
	Dip-tube for XCell ATF® 1, barbed, 3mm OD, 200mm length	B-DIP-3-200
	Dip-tube for XCell ATF® 2, TC, 1/4" ID, 250mm length	TC-DIP-LAB-.25/.5-250
	Dip-tube for XCell ATF® 4, 250mm L, Tri-clamp Top	TC:DIP-10/250
	Dip-tube for XCell ATF® 4, 450mm L, Tri-clamp Top	TC:DIP-10/450
	HP for XCell ATF® 2, M10 fitting	HP-M10-.25
	HP for XCell ATF® 2, PG13.5 fitting	HP-PG13.5-.25
	Flow Sensor for XCell ATF® 1	FS-1
	Flow Sensor for XCell ATF® 2	FS-2
	Flow Sensor for XCell ATF® 4	FS-4
	Clamp on stand for XCell ATF® 1 and 2	ATF12-STAND-CO
	Flow Sensor Cable	XC-FS-CABLE
	Pressure Sensor Cable	XC-PS-CABLE-V2
	SAPA Unit (complete) for XCell™ Lab	XC-LAB-SAPA
	Vacuum Sys, 1 ATF6, 2x4 or 4x2, 115V	VP-AT-642-115V
	Vacuum Sys, 1 ATF6, 2x4 or 4x2, 220V	VP-AT-642-220V
	XCell ATF® Devices	suATF1, 0.2um, PES
suATF1, 0.2um, PES, with P3		suATF1-S02PES-P-V2
suATF2, original, with ReadyMates		suATF2-S02PES
suATF2 with Aseptiquiks		suATF2-S02PES-AQ
suATF2 with Aseptiquiks, with P3		suATF2-S02PES-AQ-P-V2
Assy, Filter Housing, XCell ATF® 2		ATF2-PH
Assy, Filter Housing, XCell ATF® 4		ATF4-PH

Category	Description	Part Number
Autoclavable Consumables Tubing Sets	Diaphragm for XCell ATF® 2	D2:S1
	Diaphragm for XCell ATF® 4	D4:S1
	Filter, 0.2um Polyethersulfone, XCell ATF® 2	F2:RF02PES
	Filter, 0.2um Polysulfone, XCell ATF® 2	F2:RF02PS
	Filter, 30kDa Polysulfone, XCell ATF® 2	F2:RF030PS
	Filter, 0.5um Polyethersulfone, XCell ATF® 2	F2:RF05PES
	Filter, 50kDa Polysulfone, XCell ATF® 2	F2:RF50PS
	Filter, 0.2um Polyethersulfone, XCell ATF® 4	F4:RF02PES
	Filter, 0.2um Polysulfone, XCell ATF® 4	F4:RF02PS
	Filter, 30KDa Polysulfone, XCell ATF® 4	F4:RF030PS
	Filter, 0.5um Polyethersulfone, XCell ATF® 4	F4:RF05PES
	Filter, 50kDa Polysulfone, XCell ATF® 4	F4:RF50PS
	O-Ring, 224, Sil, GMP, 2PK, XCell ATF® 4 HFM	O:224-S-GMP
	Air Filter, XCell ATF® 2, A2C line	F-AIR2
	Air Filter, ATF4/6, A2C line	F-AIR1
	Pressure sensor kit, for steel XCell ATF® 2	SSATF2-PSK-V2
	Pressure sensor kit, for steel XCell ATF® 4	SSATF4-PSK-V2
	Autoclavable A2B tubing kit for XCell ATF® 4, TCs	ATF4-A2B-TC
	Autoclavable A2B tubing kit for XCell ATF® 4, TC + AseptiQuik®	ATF4-A2B-TCAQ
	Half SIP A2B valving kit for XCell ATF® 4, GMP	ATF4-CHV2-GMP
	Full SIP A2B valving kit for XCell ATF® 4, GMP	ATF4-CFV2-GMP
	Full SIP A2B Gemu valving kit for XCell ATF® 4, GMP	ATF4-CFV2-G-GMP
	Permeate and drain tubing kit, for steel XCell ATF® 2	SSATF2-TSK
	Permeate and drain tubing kit, for steel XCell ATF® 4	SSATF4-TSK
	Autoclavable A2B tubing kit for steel XCell ATF® 2, TCs	ATF2-A2B-TC
	Single use A2B tubing kit for SU XCell ATF® 2, AseptiQuik®	ATF2-A2B-AQ
	Autoclavable A2B tubing kit for SU XCell ATF® 2, TC + AseptiQuik®	ATF2-A2B-TCAQ
	Autoclavable A2B tubing kit for SU XCell ATF® 2, TC + ReadyMate™	ATF2-A2B-RMTC
	Legacy C24 A2B tube for autoclavable XCell ATF® 2 and 4	TU:S-3/4X14

Category	Description	Part Number
Installation and service	Yearly PM for 1x XCell™ Lab	SV-PM-XCLAB-1
	Yearly PM for 2x XCell™ Lab	SV-PM-XCLAB-2
	Yearly PM for 3x XCell™ Lab	SV-PM-XCLAB-3
	Yearly PM for 4x XCell™ Lab	SV-PM-XCLAB-4
	Yearly PM for 5x XCell™ Lab	SV-PM-XCLAB-5
	Installation and Training for 1x XCell™ Lab	SV-IT-XCLAB-1
	Installation and Training for 2x XCell™ Lab	SV-IT-XCLAB-2
	Installation and Training for 3x XCell™ Lab	SV-IT-XCLAB-3
	Installation and Training for 4x XCell™ Lab	SV-IT-XCLAB-4
	Installation and Training for 5x XCell™ Lab	SV-IT-XCLAB-5
	Factory Warranty+1yr Ext Warranty Qty 1	SV-WA-XCLAB-1+1YR-1
	Factory Warranty+1yr Ext Warranty Qty 2	SV-WA-XCLAB-1+1YR-2
	Factory Warranty+1yr Ext Warranty Qty 3	SV-WA-XCLAB-1+1YR-3
	Factory Warranty+1yr Ext Warranty Qty 4	SV-WA-XCLAB-1+1YR-4
	Factory Warranty+1yr Ext Warranty Qty 5	SV-WA-XCLAB-1+1YR-5
	Spares	A2C Filter for XCell™ Lab
Replacement internal SAPA filter		XC-LAB-SAPA-FLTR
A2C tubeset kit (1x XCell ATF® 1,2,4)		XC-LAB-A2C-TK
XCell™ Lab utility tubeset		XC-LAB-UTILITY-TK
Power supply kit for XCell™ Lab Controller		XC-LAB-PWR
RJ45 to USB Converter		XC-LAB-HMI-USB-RJ45
RJ45 to M12 Ethernet cable		CA-ETH-RJ45-M12
Kit, spare parts for XCell ATF® 2		KIT:A2-SVC1
Kit, spare parts for XCell ATF® 4		KIT:A4-SVC1
Assy, Air Inlet, XCell ATF® 2		ATF2:AIR-ASSY
Assy, Pump Hemisphere, air side, XCell ATF® 2		ATF2:PH-AA-AIR
Assy, Pump Hemisphere, liquid side, XCell ATF® 2		ATF2:PHLA-SMP
Air Inlet Assembly, Male Adapter		A2:AIR:M
Assy, Air Inlet, XCell ATF® 4		ATF4:AIR-ASSY
Assy, Pump Hemisphere, air side, XCell ATF® 4		ATF4:PH-AA-AIR
Assy, Pump Hemisphere, liquid side, XCell ATF® 4		ATF4:PHLA-SMP
CA, Aux pump 1 to I/O PCBA		SV-SPR-3000176
CA, Aux pump 2 to I/O PCBA		SV-SPR-3000177
CA, Aux pump 3 to I/O PCBA		SV-SPR-3000178
CA, Aux pump 4 to I/O PCBA		SV-SPR-3000179
CA, Pump A to I/O PCBA		SV-SPR-3000190
CA, Pump B to I/O PCBA		SV-SPR-3000191
CA, BR A - VCD Sensor Bioreactor A - Input 1		SV-SPR-3000192
CA, BR B - VCD Sensor Bioreactor B - Input 2		SV-SPR-3000193
CA, Multipump to I/O PCBA RS232H		SV-SPR-3000194
CA, BR Weight B to I/O PCBA RS232F		SV-SPR-3000195

Category	Description	Part Number
	CA, BR Weight A to I/O PCBA RS232D	SV-SPR-3000196
	CA, Modbus to I/O PCBA	SV-SPR-3000197
	CA, Filter A P3 SCIPRES to P# bulkhead	SV-SPR-3000198
	CA, Filter A P3 SCIPRES to P# bulkhead	SV-SPR-3000199
	CA, 24v Power In	SV-SPR-3000200
	CA, On/Off switch	SV-SPR-3000201
	CA, I/O Board Power	SV-SPR-3000202
	CA, scilog DIN1 Filter A & B	SV-SPR-3000203
	CA, 24v Power out to ENET switch	SV-SPR-3000204
	Gold Standard Flow Sensor Retentate (ATF1)	SV-SPR-3000205
	Gold Standard Flow Sensor Retentate (ATF2)	SV-SPR-3000208
	Gold Standard Flow Sensor Retentate (ATF4)	SV-SPR-3000209
	P Adapter: 1/4"CPC to TC	SV-SPR-3000338
	P Adapter: 1/2" OD to TC	SV-SPR-3000339
	RJ45 to USB Converter	SV-SPR-3000370
	P Reducer: 6MM x 1/4" SS	SV-SPR-3000371
	P Reducers: 1/4" 3/4" SS	SV-SPR-3000387
	Coupler, bulkhead, M12, 5 Pin, F/M	SV-SPR-3000388
	Air Filter, 1.6 Sq.ft Filtration Area	SV-SPR-3000995
	Microprocessor Board, IO, C110M	SV-SPR-CS-10748
	CA, 24VDC to Compactlogix L19 V terminal	SV-SPR-CS-11055
	CA, 24VDC to Compactlogix L19 FP terminal	SV-SPR-CS-11056
	CA, PLC to Sonalert (Buzzer)	SV-SPR-CS-11058
	CA, PLC 1 to Modbus Terminals	SV-SPR-CS-11104
	CA, PLC 2 to Modbus Terminals	SV-SPR-CS-11105
	CA, Enfield PRV01 to IO Bd Port PRV1	SV-SPR-CS-11106
	CA, Enfield PRV01 to IO Bd Port PRV2	SV-SPR-CS-11107
	CA, BRA Stop A - ATF A system Stop	SV-SPR-CS-11108
	CA, BRA Stop B - ATF B system Stop	SV-SPR-CS-11109
	CA, ATF A Flow Sensor (to Terminal Blocks)	SV-SPR-CS-11110
	CA, ATF B Flow Sensor (to Terminal Blocks)	SV-SPR-CS-11111
	PCV Assembly	SV-SPR-CS-11112
	SAPA Filter	SV-SPR-EKF22DD
	PRESS XMTR, 1.5"TC; 30"Hg-30psig, 4-20MA	SV-SPR-RM-10635
	Pressure Monitor, Din Mnt, 24VDC, Modbus	SV-SPR-RM-11598
	Cap, M12 Female, 6" SS Lanyard	SV-SPR-RM-11618
	Fuses, 5 x 20mm, 250mA, 250V	SV-SPR-RM-11907
	Fitting, Bulhead, Quick connect, Male 1/2"	SV-SPR-RM-11921
	Fuses, Fast Acting, 125V, 5 x 20mm, 1A	SV-SPR-RM-12016
	Stem protector, SS, Quick connect CAP	SV-SPR-RM-12019
	Fitting TC to 1/2 Swagelok	SV-SPR-RM-12020

Category	Description	Part Number
	Controller, Compact Logix 5370 L1	SV-SPR-RM-12470
	Fuses, Fast Acting, 125V, 4A	SV-SPR-RM-12474
	Modbus RTU Comm Module	SV-SPR-RM-12498
	Fuses, Fast Acting, 250V, 3A, 5 x 20mm	SV-SPR-RM-12500
	Adaptor, Elbow, M12xRJ45, Female	SV-SPR-RM-12551
	Cable, 0.3m RJ45xRJ45 Male	SV-SPR-RM-12552

## 12. Appendix B IT, IP Addresses and External Communication

Either ethernet port on the controller can be used to connect to the supplied tablet/HMI which runs Repligen's XCell™ Lab Software. It should not be transferred to another Surface Pro or any other computer device.

The two ethernet ports are switched internally and hence equivalent. Future software updates will use the second port for advanced functionality. The Surface Pro tablet comes with Wi-Fi capability built in but is not used by the XCell™ Lab software.

Connection to a corporate network, a remote DCS, supervisory monitoring and control system or domain management of tablet or mapped drives, is not recommended or supported.

**Note:** At shipping, the controller and Surface Pro are issued with the IP addresses: 192.168.1.101 and 192.168.1.167, respectively. The HMI is configured to look for these addresses on the process control network.



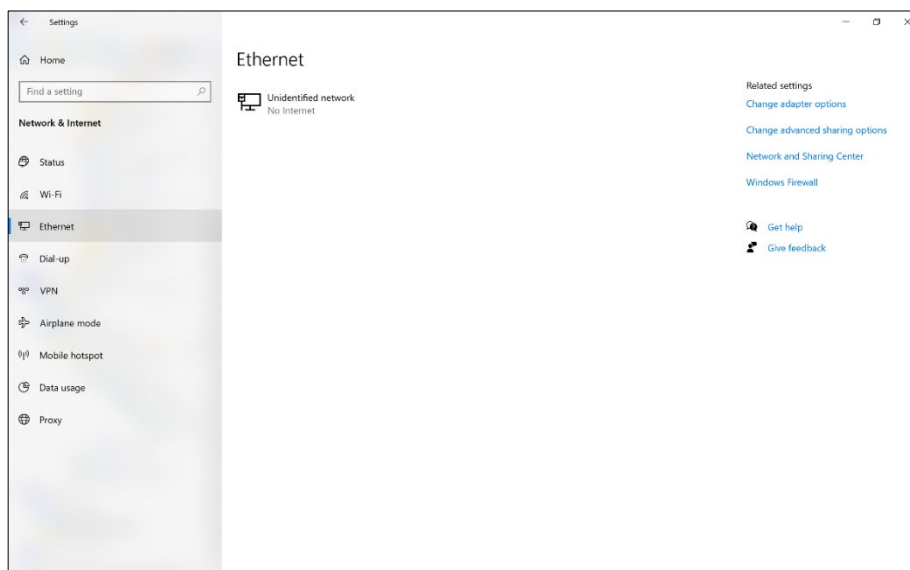
Precaution: Please ensure that the ethernet cables are connected properly. If not, the XCell™ lab will trigger an alarm.

### 12.1 Changing IP address on the HMI

If you find an error in communication between the tablet and the controller, you may need to edit the IP address of the tablet. Please see instructions below, which should only be carried out by a qualified IT or automation engineer or an authorized Repligen engineer.

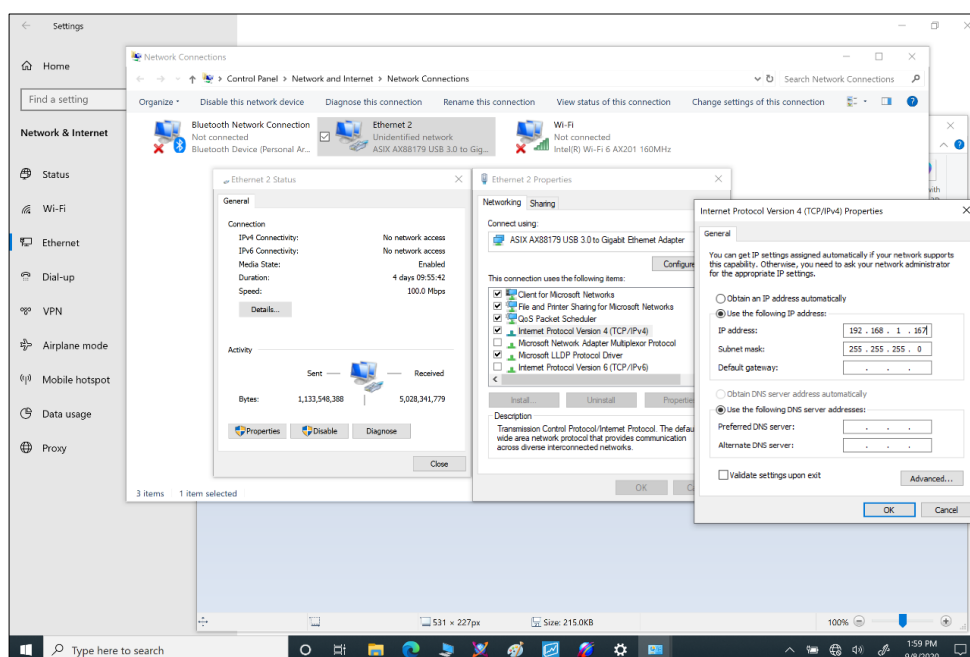
1. Open Control Panel (press Windows Start, then press the Gear Icon).
2. Click on Network and Internet.
3. Click on Ethernet.
4. On the right pane, click on Change adapter options.

Figure 44. Control Panel network and sharing center



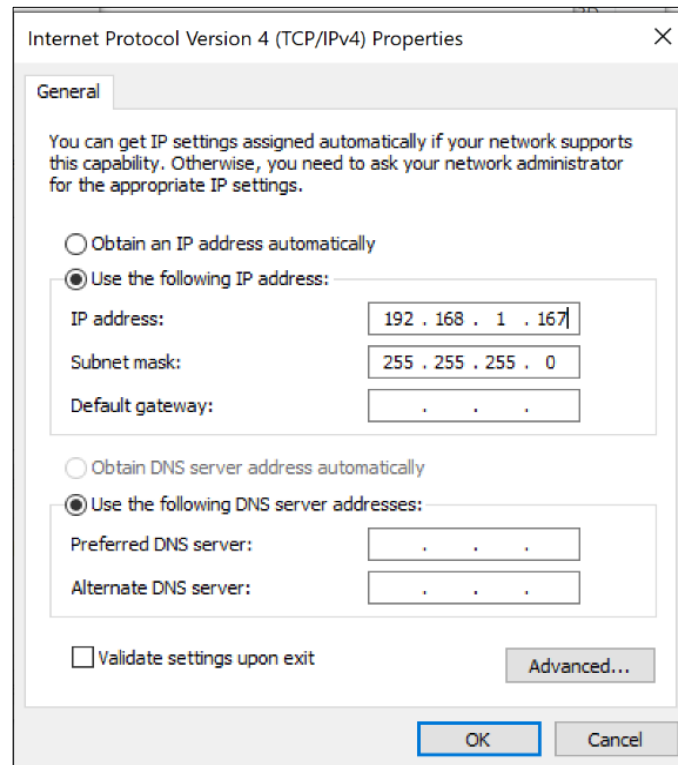
5. Click on the Ethernet 2 network icon (ASIX adapter). This can also be accomplished with a Right-click on the network adapter and selecting Properties.
6. Deselect Internet Protocol Version 6 (TCP/IPv6) if it is checked.
7. Select (Highlight) the Internet Protocol Version 4 (TCP/IPv4) option.
8. Click the Properties button.

Figure 45. Control Panel's network adapter properties



9. Select the Use the following IP address option.
10. Set the IP address (192.168.1.167).
11. Press the Tab key.
12. Set the Subnet mask. Confirm the subnet mask is 255.255.255.0.
13. Leave the Default gateway alone.
14. Leave the Obtain DNS Server section below alone.
15. Click the OK button.



**Figure 46. Windows 10 network adapter TCP/IPv4 properties**

16. Click the Close button again.

Once you complete the steps, you can navigate back to the XCell™ Lab Software and test the new configuration to see if it works correctly.

### 13. Appendix C List of system-defined alarms

Alarm/Interlock	Event Trigger	System Response
System Configuration Error	Hardware configured is not compatible with the system (i.e. the following is invalid: filter size, fiber ID, filter length, number of fibers, both single and dual FT enabled, pressure sensor config, save command is given while filter is running)	The PLC cannot save
Diaphragm Command Limited by Range	Flow rate entered is outside of the system range	ATF controller restricts flow rate to the minimum or maximum flow, whichever is closer
Invalid Dual Mode Command	Filter A and Filter B configuration do not match	Dual Mode will not turn on
Loss of Pressure Supply	Pressure supply is absent	System maintains running at current setpoint with no feedback changes to the pressure curve
Loss of Vacuum Supply	Vacuum supply absent	System stops running
Filter A Flow Not Meeting Setpoint	The average flow after 40 consecutive cycles is less than 90% of the assumed diaphragm displacement volume	System adjusts the pressure curve to try to attain the setpoint
A2B Flow Sensor Communication Error	One of the A2B flow sensors are not communicating, usually due to a disconnected cable	If the system is not running, it will not be able to start process, if the system is running when this alarm occurs the system maintains running at current setpoint with no feedback changes to the pressure curve
A2B Flow Sensor Data Error	All flow sensors are properly communicating, but one or more of the A2B flow sensors have not updated in 60 seconds or more (i.e. not attached to the A2B line), or if there is a mismatch of $\pm 15\%$ between the two A2B flow sensors in dual A2B mode	If the system is not running, it will not be able to start process, if the system is running when this alarm occurs the system maintains running at current setpoint with no feedback changes to the pressure curve
Permeate Flow Sensor Communication Error	One of the permeate flow sensors are not communicating, usually due to a disconnected cable	N/A
Permeate Flow Sensor Data Error	All flow sensors are properly communicating, but one or more of the A2B flow sensors have not updated in 60 seconds or more (i.e. not attached to the permeate line)	N/A

Alarm/Interlock	Event Trigger	System Response
Diaphragm Pressure Sensor Failure	Diaphragm pressure sensor (P2) analog input is out of range (0-10V) or disconnected from the PLC	If enabled, system will not calculate TMP, it is set to 0
Permeate Pressure Sensor Failure	Permeate pressure sensor (P3) is not communicating to the PLC, when it is configured to be present	If enabled, system will not calculate TMP, it is set to 0
PCV not Tracking Setpoint	The filter is running, but the diaphragm pressure sensor (P2) reads 35 mbar or more below the commanded pressure or exhaust value for more than 3 consecutive cycles	This alarm can be a demonstration of supply deficiencies. If the deficiency occurs on the vacuum command, the pressure command will be locked and not allowed to increase. If the alarm occurs due to a lack of pressure, the vacuum command will be locked and not allowed to increase
Initialization Error	The initialization process does not complete successfully	Cannot start process when caused by inadequate pressure supply, when caused by flow sensors, the default flow values will be used
Filter B Flow not Meeting Setpoint	The average flow after 40 consecutive cycles is less than 90% of the setpoint	System adjusts the pressure curve to try to attain the setpoint
PCV not Tracking Setpoint	The filter is running, but the diaphragm pressure sensor (P2) reads 35 mbar or more below the commanded pressure or exhaust value for more than 3 consecutive cycles	This alarm can be a demonstration of supply deficiencies. If the deficiency occurs on the vacuum command, the pressure command will be locked and not allowed to increase. If the alarm occurs due to a lack of pressure, the vacuum command will be locked and not allowed to increase
Initialization Error	The initialization process does not complete successfully	Cannot start process when caused by inadequate pressure supply, when caused by flow sensors, the default flow values will be used

## 14. Appendix D Editing and adding access and passwords

### 14.1 Windows accounts and passwords

Two Windows accounts are already set up on the Surface Pro. One of them is a Windows Administrator who can create and edit users and passwords, for both Windows and XCell™ Lab Software, and the other is a normal Windows User who can run the XCell™ Lab Software.

These two predefined windows account logons are **User** and **OAdmin** ([zero]Admin). By default, *Windows User* will be logged in automatically, which then loads the XCell™ Lab Software (called the Wonderware View software application within Windows System) with a default username of **Supervisor**. A **Supervisor** has access to all areas of the XCell™ Lab Software. For many users, no changes.

By having a single *Windows User* account, all files and folder structures will be the same for all users. The *Windows User* account is a top-level group that contains all the XCell™ Lab Software users. XCell™ Lab users of any kind are by default *Windows Users*.

**Note:** *If you do not wish to modify any account usernames and passwords, nor change any Windows administrator settings, you would never need to manually log in to Windows.*

Login **OAdmin** (Operating System Admin) is required to modify existing XCell™ Lab Software usernames or passwords or add new ones. It is recommended that a qualified IT or Repligen engineer carries out these tasks. **OAdmin** does not have the same functionality within the XCell™ Lab Software as **Users**.

The two Windows accounts' usernames and passwords are listed in [Table 17](#).

**Table 17. Windows usernames and passwords**

User type	Username	Password	Used For
Windows	OAdmin	Admin123	Windows admin tasks and changing XCell™ Lab Software usernames and passwords
Windows	User (logged in automatically)	User123	Using the XCell™ Lab Software

**Note:** *It is not recommended to create new Windows Users – they would not be able to access the XCell™ Lab software and the file structures would also be different.*

### 14.2 XCell™ Lab Software usernames and passwords

In [Table 18](#) the default usernames and passwords are shown along with their permission rights. The default usernames are essentially a short version of the **role** they play.

**Table 18. XCell™ Lab users and roles**

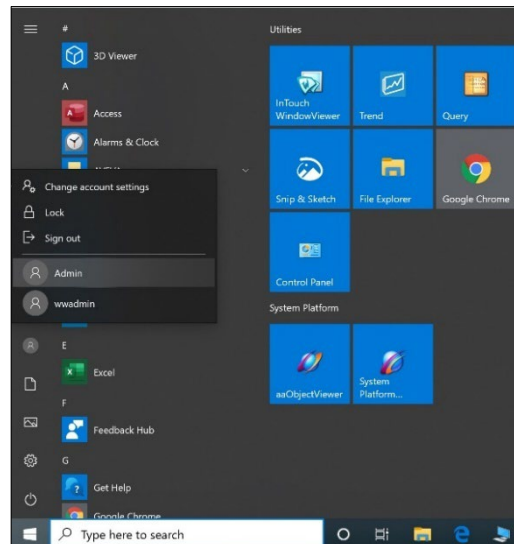
Windows Admin User Group Name	XCell™ Lab Username	Change Network	Alarm and System Configuration	Start/Stop Flow SP Ack Alarms
XCell_Engineers	Eng	✓	✓	✓
XCell_Supervisors	Super		✓	✓
XCell_Users	Opr			✓

### 14.2.1 Changing usernames and passwords

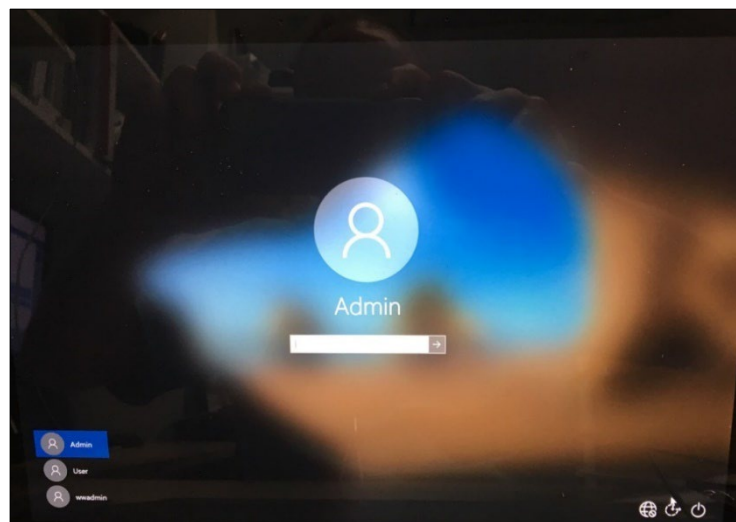
To limit user access and enhance security in the XCell™ Lab software, XCell™ users can be set up in the Windows environment and be assigned to the Roles (user groups) listed in [Table 18](#) above.

Please see below for instructions on how to create a user account (also applies to deleting and managing accounts). You may prefer to use the supplied touchpad for these set of actions.

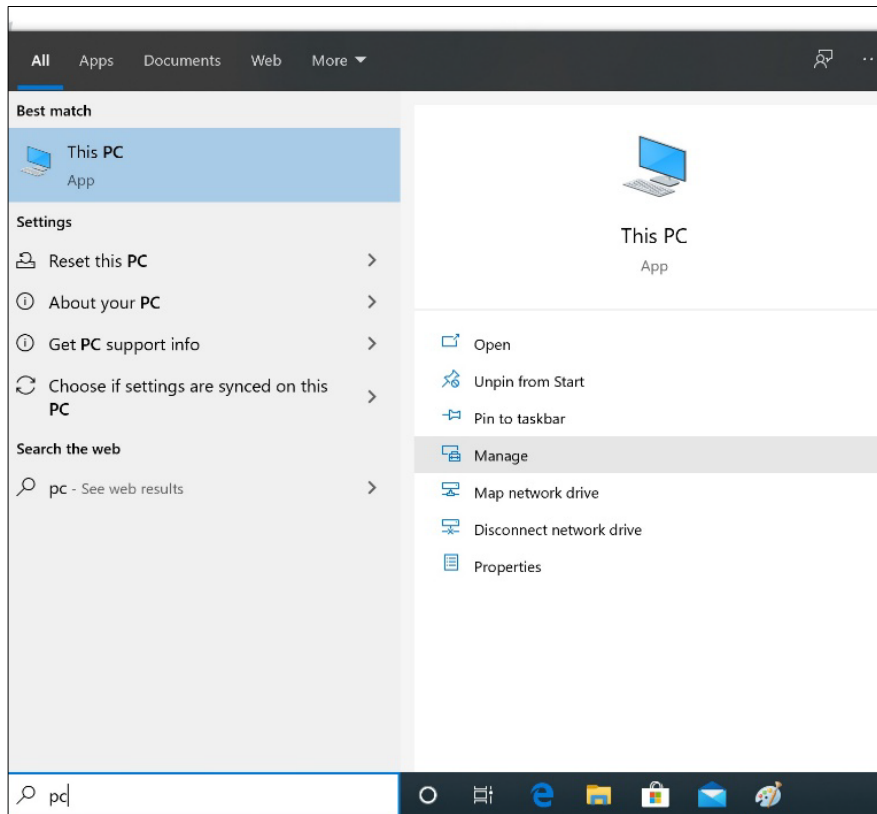
1. Press Start and prepare to log in as the Windows Administrator. If the start button (the windows icon) is not visible, you should press the Windows/Start button on the tablet, or swipe right.



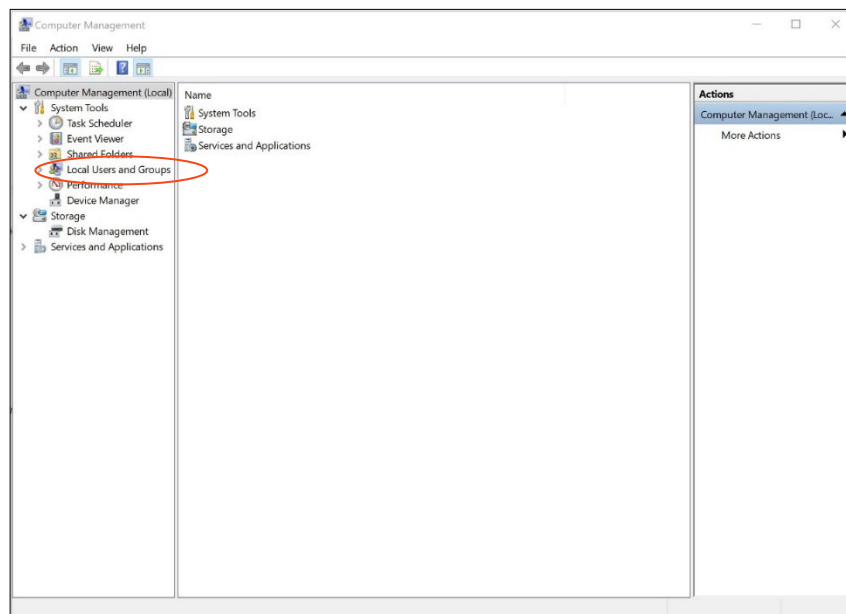
2. Click the circular user icon and Select the Admin user (see image above).



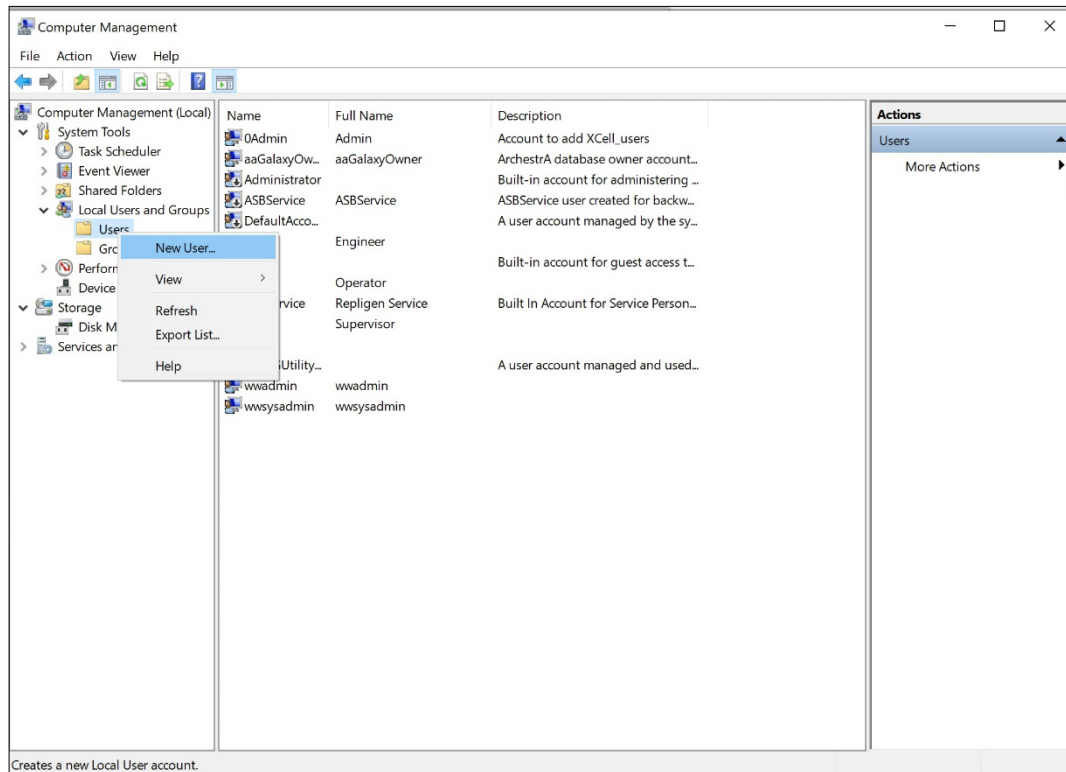
3. Enter Password Admin123.
4. The Windows Admin is logged in.
5. Next press the Windows Start button and type PC (see below).



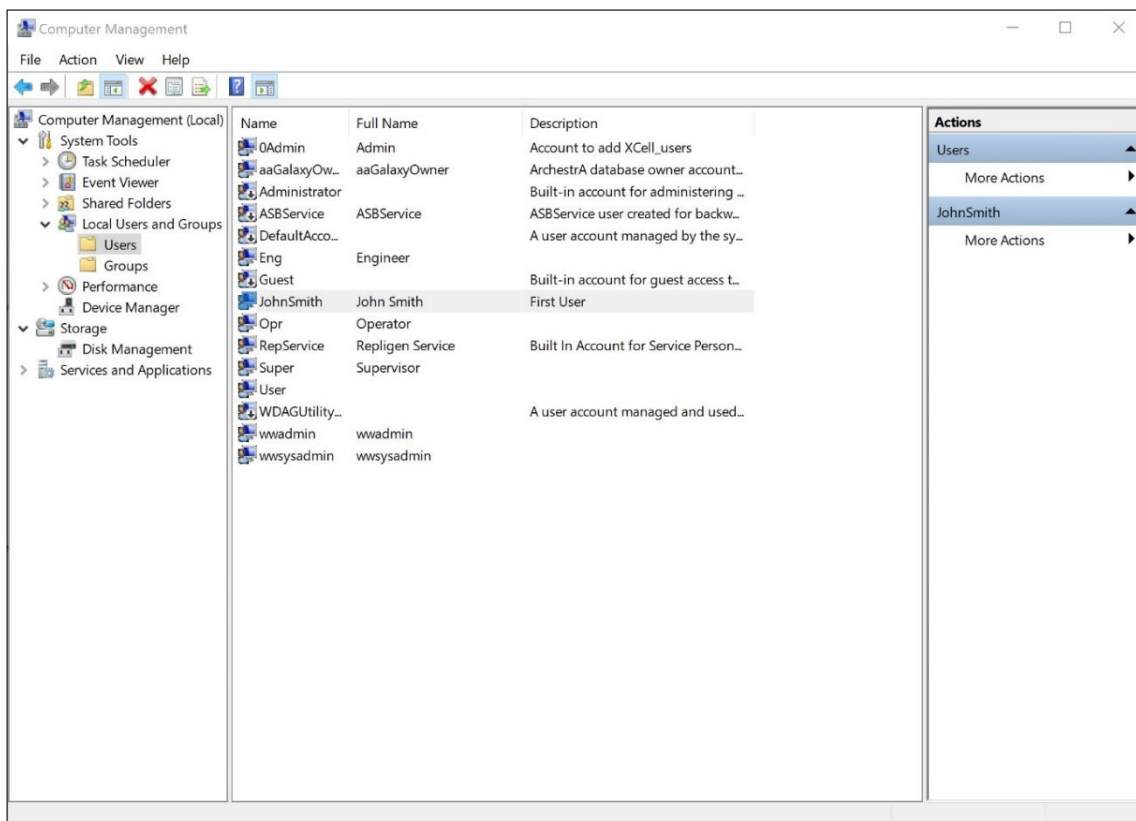
6. Select Manage. The Manager opens.
7. Navigate to Local Users and Groups.



8. Right click on Users and select New User.

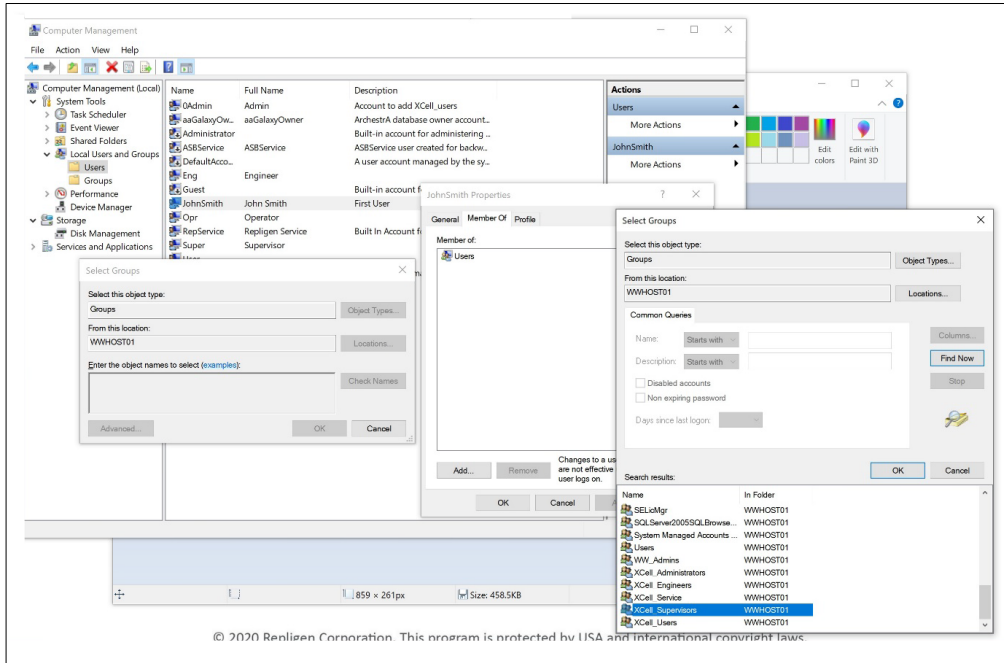


9. Enter user information. (Description and Full names are optional).

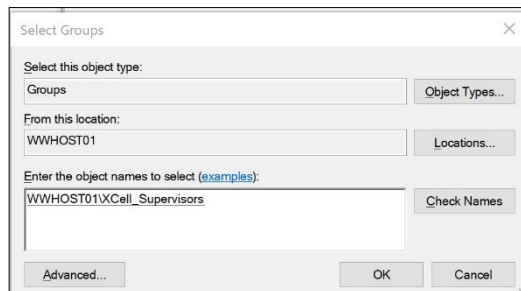


10. Important: Be sure to deselect User must change password at next logon.

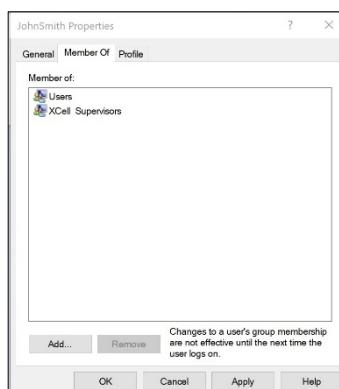
11. Press the Create button. The user is added.



12. Assign to a group. Double click (or right click and select properties).
13. Navigate to the Member Of tab and press the Add button. Another window appears.
14. Press the Advanced Button. Another window appears. Press the Find Now button.
15. Scroll to the bottom and select one of the XCell™ groups. XCell Supervisors is selected.
16. Press the OK button. The window closes.

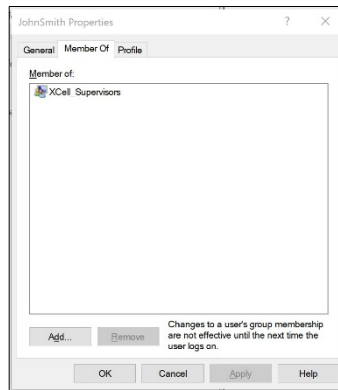


17. Press the OK button. The user is assigned.

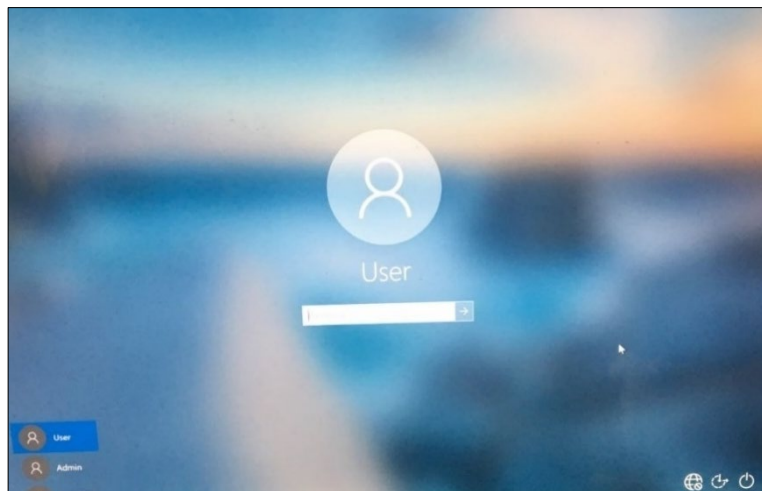


18. Select the Users group, and press the Remove button, then Press the OK button.





19. The user is only assigned to the appropriate group.
20. Add as many users as required while Admin is logged in.
21. When complete, sign out of the admin account (and best to restart the Surface Pro).
22. Press Start, click the circular user icon and select sign out.



23. Enter password User123 to return to the XCell™ windows user account.
24. If not already running (you can check by swiping right to show all active programs), restart the Wonderware View (XCell™ Lab software) application.

## 15. Appendix E Default values on HMI

Figure 47. Default values for ATF Pump Configuration

SIZE	PUMP DISPLACEMENT	ABSOLUTE MIN FLOW	ABSOLUTE MAX FLOW	DEFAULT FLOW
SU ATF1	17.0 mL	70 mL/min	200 mL/min	140 mL/min
SU ATF2	93.5 mL	0.3 L/min	1.5 L/min	0.9 L/min
ATF2	93.5 mL	0.3 L/min	1.5 L/min	0.9 L/min
ATF4	411.0 mL	1.5 L/min	8.0 L/min	6.5 L/min

Figure 48. Default values for ATF Flow Alarms

ALARM	ENABLE	LIMITS	UNITS	DELAY (sec)	PAUSE	STOP	LIGHT	HORN
HiHi	<input checked="" type="checkbox"/>	25.0	%	1	<input type="checkbox"/>	<input type="checkbox"/>	<input checked="" type="checkbox"/>	<input checked="" type="checkbox"/>
Hi	<input checked="" type="checkbox"/>	10.0	%	30	<input type="checkbox"/>	<input type="checkbox"/>	<input type="checkbox"/>	<input type="checkbox"/>
Lo	<input checked="" type="checkbox"/>	10.0	%	30	<input type="checkbox"/>	<input type="checkbox"/>	<input type="checkbox"/>	<input type="checkbox"/>
LoLo	<input checked="" type="checkbox"/>	25.0	%	1	<input type="checkbox"/>	<input type="checkbox"/>	<input checked="" type="checkbox"/>	<input checked="" type="checkbox"/>

Figure 49. Default values for Displacement Volume alarms

ALARM	ENABLE	LIMITS	UNITS	DELAY (sec)	PAUSE	STOP	LIGHT	HORN
HiHi	<input checked="" type="checkbox"/>	7.5	%	1	<input type="checkbox"/>	<input type="checkbox"/>	<input checked="" type="checkbox"/>	<input checked="" type="checkbox"/>
Hi	<input checked="" type="checkbox"/>	5.0	%	30	<input type="checkbox"/>	<input type="checkbox"/>	<input type="checkbox"/>	<input type="checkbox"/>
Lo	<input checked="" type="checkbox"/>	5.0	%	30	<input type="checkbox"/>	<input type="checkbox"/>	<input type="checkbox"/>	<input type="checkbox"/>
LoLo	<input checked="" type="checkbox"/>	7.5	%	1	<input type="checkbox"/>	<input type="checkbox"/>	<input checked="" type="checkbox"/>	<input checked="" type="checkbox"/>

Buttons: Acknowledge Selected Alarms, Acknowledge Visible Alarms, Alarm Configuration, Reset to default

Figure 50. Default values for System Alarms

ALARM	ENABLE	PAUSE	STOP	LIGHT	HORN
Vacuum	<input checked="" type="checkbox"/> Insufficient Vacuum	<input checked="" type="checkbox"/>	<input type="checkbox"/>	<input type="checkbox"/>	<input checked="" type="checkbox"/>
Flow Sensor	<input checked="" type="checkbox"/> Unreliable Flow sensor	<input type="checkbox"/>	<input type="checkbox"/>	<input checked="" type="checkbox"/>	<input type="checkbox"/>

Buttons: Acknowledge Selected Alarms, Acknowledge Visible Alarms, Alarm Configuration, Reset to default

Figure 51. Default values for P3 Permeate Pressure Alarms

Logon Not Required  
Role: XCell Supervisor  
04/27/2020 12:28

STATUS **ALARM CONFIGURATION** STAMP

ATF Flow		Displacement Volume			System Alarms		P3 Permeate Pressure	
ALARM	ENABLE	LIMITS	UNITS	DELAY (sec)	PAUSE	STOP	LIGHT	HORN
ATF-A Lo	<input type="checkbox"/>	-345	mbar	30	<input type="checkbox"/>	<input type="checkbox"/>	<input checked="" type="checkbox"/>	<input checked="" type="checkbox"/>
ATF-A LoLo	<input type="checkbox"/>	-483	mbar	30	<input type="checkbox"/>	<input type="checkbox"/>	<input checked="" type="checkbox"/>	<input checked="" type="checkbox"/>
ATF-B Lo	<input type="checkbox"/>	-345	mbar	30	<input type="checkbox"/>	<input type="checkbox"/>	<input checked="" type="checkbox"/>	<input checked="" type="checkbox"/>
ATF-B LoLo	<input type="checkbox"/>	-483	mbar	30	<input type="checkbox"/>	<input type="checkbox"/>	<input checked="" type="checkbox"/>	<input checked="" type="checkbox"/>

Reset to default

Acknowledge Selected Alarms    Acknowledge Visible Alarms    Alarm Configuration

## 16. Index

Alarm	18, 24, 32, 35, 38, 39, 40, 41, 42, 49, 55, 58, 59	Installation	9, 19, 53
Alternating tangential flow	13	Mode	23, 25, 28, 29, 31, 44, 58
Backflush	14, 47	Precautions	10, 11, 13
Components	9, 12, 19, 46, 50	Pressure sensor	12, 16, 18, 58, 59
Connections	11, 18, 49	Pump status	28, 29
Diafiltration	48	Query	44, 45
High Productivity Harvest	13, 48	Shear	13, 23, 48
Historian	20, 32, 42, 43, 44, 46	TMP	59
		Trend	20, 21, 38, 42, 43, 44, 46